

For Research Use Only

MIS12 Polyclonal antibody

Catalog Number: 19820-1-AP



Basic Information

Catalog Number: 19820-1-AP	GenBank Accession Number: BC000229	Purification Method: Antigen affinity purification
Size: 150ul , Concentration: 500 µg/ml by Nanodrop;	GeneID (NCBI): 79003	Recommended Dilutions: WB 1:1000-1:4000
Source: Rabbit	Full Name: MIS12, MIND kinetochore complex component, homolog (yeast)	
Isotype: IgG	Calculated MW: 205 aa, 24 kDa	
Immunogen Catalog Number: AG13870	Observed MW: 25-28 kDa	

Applications

Tested Applications: WB, ELISA	Positive Controls: WB : HEK-293 cells, HeLa cells, HepG2 cells
Species Specificity: human, mouse, rat	

Background Information

The MIS12 complex, composed of the Mis12, Pmf1, Nsl1 and Dsn1 subunits, is a highly conserved kinetochore protein that interacts with the Ndc80 and Knl1 complexes, forming the KMN network (PMID: 32341029). MIS12 is a part of the MIS12 complex which is required for normal chromosome alignment and segregation and for kinetochore formation during mitosis. MIS12 is essential for proper kinetochore microtubule attachments (PubMed:23891108)

Storage

Storage:
Store at -20°C. Stable for one year after shipment.
Storage Buffer:
PBS with 0.02% sodium azide and 50% glycerol pH 7.3.
Aliquoting is unnecessary for -20°C storage

*** 20ul sizes contain 0.1% BSA

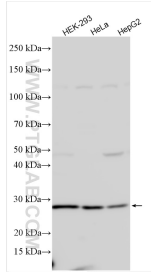
For technical support and original validation data for this product please contact:

T: 1 (888) 4PTGLAB (1-888-478-4522) (toll free in USA), or 1(312) 455-8498 (outside USA)

E: proteintech@ptglab.com
W: ptglab.com

This product is exclusively available under Proteintech Group brand and is not available to purchase from any other manufacturer.

Selected Validation Data



Various lysates were subjected to SDS PAGE followed by western blot with 19820-1-AP (MIS12 antibody) at dilution of 1:2000 incubated at room temperature for 1.5 hours.