

For Research Use Only

MIS12 Polyclonal antibody, PBS Only

Catalog Number:19820-1-PBS



Basic Information

Catalog Number:

19820-1-PBS

Size:

100ug , Concentration: 1 mg/ml by Nanodrop;

Source:

Rabbit

Isotype:

IgG

Immunogen Catalog Number:

AG13870

GenBank Accession Number:

BC000229

GeneID (NCBI):

79003

UNIPROT ID:

Q9H081

Full Name:

MIS12, MIND kinetochore complex component, homolog (yeast)

Calculated MW:

205 aa, 24 kDa

Observed MW:

25-28 kDa

Purification Method:

Antigen affinity purification

Applications

Tested Applications:

WB, IHC, IF/ICC, Indirect ELISA

Species Specificity:

human, mouse, rat

Background Information

The MIS12 complex, composed of the Mis12, Pmf1, Nsl1 and Dsn1 subunits, is a highly conserved kinetochore protein that interacts with the Ndc80 and Knl1 complexes, forming the KMN network (PMID: 32341029). MIS12 is a part of the MIS12 complex which is required for normal chromosome alignment and segregation and for kinetochore formation during mitosis. MIS12 is essential for proper kinetochore microtubule attachments (PubMed:23891108)

Storage

Storage:

Store at -80°C.

Storage Buffer:

PBS only, pH7.3

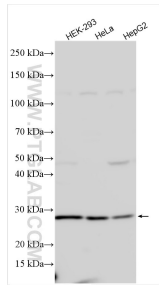
For technical support and original validation data for this product please contact:

T: 1 (888) 4PTGLAB (1-888-478-4522) (toll free in USA), or 1(312) 455-8498 (outside USA)

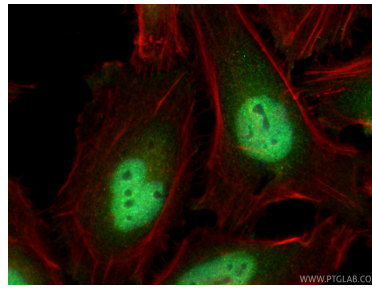
E: proteintech@ptglab.com
W: ptglab.com

This product is exclusively available under Proteintech Group brand and is not available to purchase from any other manufacturer.

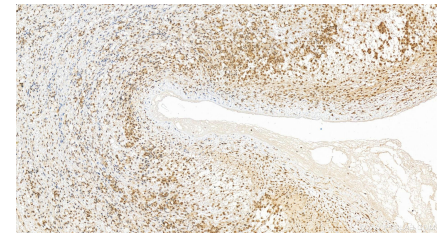
Selected Validation Data



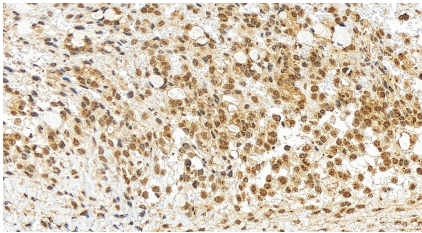
Various lysates were subjected to SDS PAGE followed by western blot with 19820-1-AP (MIS12 antibody) at dilution of 1:2000 incubated at room temperature for 1.5 hours. This data was developed using the same antibody clone with 19820-1-PBS in a different storage buffer formulation.



Immunofluorescent analysis of (4% PFA) fixed HeLa cells using MIS12 antibody (19820-1-AP) at dilution of 1:400 and CoraLite®488-Conjugated Goat Anti-Rabbit IgG(H+L) (SA00013-2), CL594-phalloidin (red). This data was developed using the same antibody clone with 19820-1-PBS in a different storage buffer formulation.



Immunohistochemical analysis of paraffin-embedded human ovary cancer tissue slide using 19820-1-AP (MIS12 antibody) at dilution of 1:400 (under 20x lens). Heat mediated antigen retrieval with Tris-EDTA buffer (pH 9.0). This data was developed using the same antibody clone with 19820-1-PBS in a different storage buffer formulation.



Immunohistochemical analysis of paraffin-embedded human ovary cancer tissue slide using 19820-1-AP (MIS12 antibody) at dilution of 1:400 (under 20x lens). Heat mediated antigen retrieval with Tris-EDTA buffer (pH 9.0). This data was developed using the same antibody clone with 19820-1-PBS in a different storage buffer formulation.