

For Research Use Only

STAG2 Polyclonal antibody

Catalog Number: 19837-1-AP

1 Publications



Basic Information

Catalog Number:

19837-1-AP

Size:

150ul, Concentration: 700 ug/ml by Nanodrop and 500 ug/ml by Bradford method using BSA as the standard;

Source:

Rabbit

Isotype:

IgG

Immunogen Catalog Number:

AG13825

GenBank Accession Number:

BC001765

GeneID (NCBI):

10735

UNIPROT ID:

Q8N3U4

Full Name:

stromal antigen 2

Calculated MW:

1231 aa, 141 kDa

Observed MW:

130-141 kDa

Purification Method:

Antigen affinity purification

Recommended Dilutions:

WB 1:1000-1:4000

IP 0.5-4.0 ug for 1.0-3.0 mg of total protein lysate

IHC 1:20-1:200

IF/ICC 1:50-1:500

Applications

Tested Applications:

WB, IHC, IF/ICC, IP, ELISA

Cited Applications:

WB

Species Specificity:

human, mouse, rat

Cited Species:

human

Note-IHC: suggested antigen retrieval with TE buffer pH 9.0; (*) Alternatively, antigen retrieval may be performed with citrate buffer pH 6.0

Positive Controls:

WB: Jurkat cells, HeLa cells, K-562 cells, MCF-7 cells, NIH/3T3 cells

IP: U-251 cells, MCF-7 cells

IHC: human cervical cancer tissue,

IF/ICC: HEK-293 cells,

Background Information

STAG2, also named as SA2, is a component of cohesin complex, a complex required for the cohesion of sister chromatids after DNA replication. The cohesin complex may play a role in spindle pole assembly during mitosis. Mutations in STAG2 appear to be a first step in the transformation of a normal cell into a cancer cell.

Notable Publications

Author	Pubmed ID	Journal	Application
Luwei He	34268906	Cancer Commun (Lond)	WB

Storage

Storage:

Store at -20°C. Stable for one year after shipment.

Storage Buffer:

PBS with 0.02% sodium azide and 50% glycerol pH 7.3.

Aliquoting is unnecessary for -20°C storage

*** 20ul sizes contain 0.1% BSA

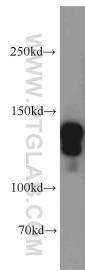
For technical support and original validation data for this product please contact:

T: 1 (888) 4PTGLAB (1-888-478-4522) (toll free in USA), or 1(312) 455-8498 (outside USA)

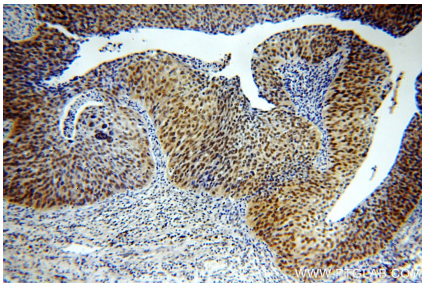
E: proteintech@ptglab.com
W: ptglab.com

This product is exclusively available under Proteintech Group brand and is not available to purchase from any other manufacturer.

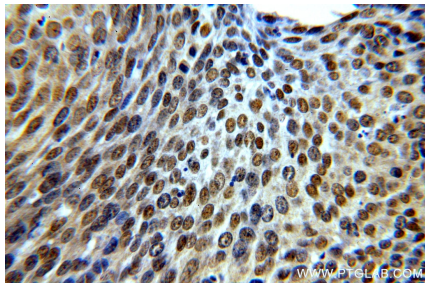
Selected Validation Data



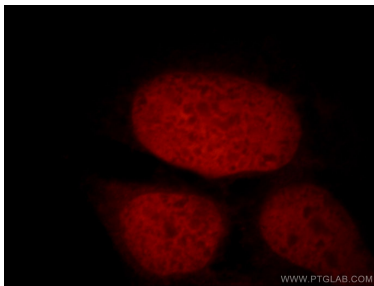
Jurkat cells were subjected to SDS PAGE followed by western blot with 19837-1-AP (STAG2 antibody) at dilution of 1:1000 incubated at room temperature for 1.5 hours.



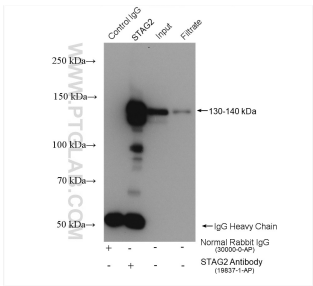
Immunohistochemical analysis of paraffin-embedded human cervical cancer using 19837-1-AP (STAG2 antibody) at dilution of 1:100 (under 10x lens).



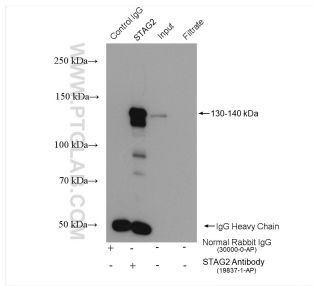
Immunohistochemical analysis of paraffin-embedded human cervical cancer using 19837-1-AP (STAG2 antibody) at dilution of 1:100 (under 40x lens).



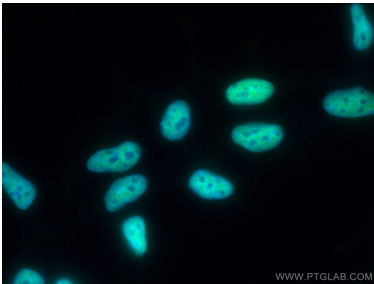
Immunofluorescent analysis of 293 cells, using STAG2 antibody 19837-1-AP at 1:25 dilution and Rhodamine-labeled goat anti-rabbit IgG (red).



IP result of anti-STAG2 (IP:19837-1-AP, 4ug; Detection:19837-1-AP 1:3000) with MCF-7 cells lysate 2120 ug.



IP result of anti-STAG2 (IP:19837-1-AP, 4ug; Detection:19837-1-AP 1:3000) with U-251 cells lysate 3320 ug.



Immunofluorescent analysis of (4% PFA) fixed HEK-293 cells using STAG2 antibody (19837-1-AP) at dilution of 1:200 and CoraLite® 488-Conjugated AffiniPure Goat Anti-Rabbit IgG(H+L).