

For Research Use Only

STAG2 Polyclonal antibody, PBS Only

Catalog Number: 19837-1-PBS



Basic Information

Catalog Number:

19837-1-PBS

Size:

100ug, Concentration: 1 mg/ml by Nanodrop;

Source:

Rabbit

Isotype:

IgG

Immunogen Catalog Number:

AG13825

GenBank Accession Number:

BC001765

GeneID (NCBI):

10735

UNIPROT ID:

Q8N3U4

Full Name:

stromal antigen 2

Calculated MW:

1231 aa, 141 kDa

Observed MW:

130-141 kDa

Purification Method:

Antigen affinity purification

Applications

Tested Applications:

WB, IHC, IF/ICC, IP, Indirect ELISA

Species Specificity:

human, mouse, rat

Background Information

STAG2, also named as SA2, is a component of cohesin complex, a complex required for the cohesion of sister chromatids after DNA replication. The cohesin complex may play a role in spindle pole assembly during mitosis. Mutations in STAG2 appear to be a first step in the transformation of a normal cell into a cancer cell.

Storage

Storage:

Store at -80°C.

Storage Buffer:

PBS Only

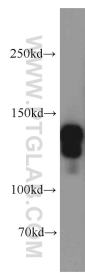
For technical support and original validation data for this product please contact:

T: 1 (888) 4PTGLAB (1-888-478-4522) (toll free in USA), or 1(312) 455-8498 (outside USA)

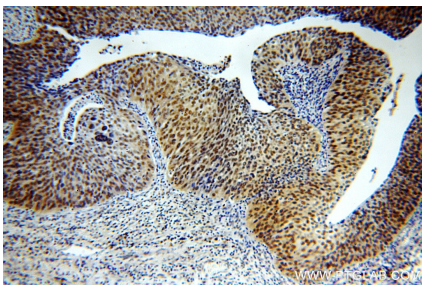
E: proteintech@ptglab.com
W: ptglab.com

This product is exclusively available under Proteintech Group brand and is not available to purchase from any other manufacturer.

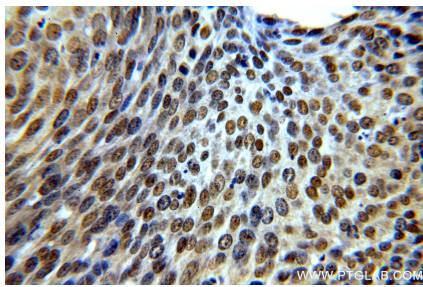
Selected Validation Data



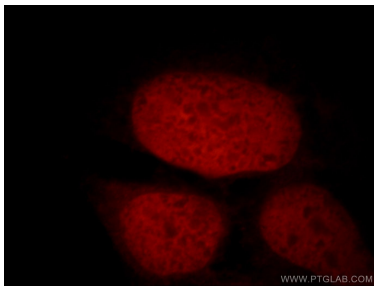
Jurkat cells were subjected to SDS PAGE followed by western blot with 19837-1-AP (STAG2 antibody) at dilution of 1:1000 incubated at room temperature for 1.5 hours. This data was developed using the same antibody clone with 19837-1-PBS in a different storage buffer formulation.



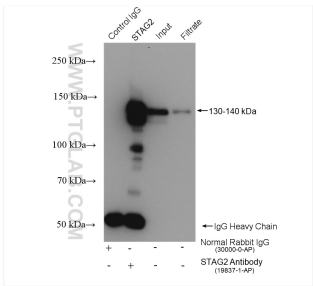
Immunohistochemical analysis of paraffin-embedded human cervical cancer using 19837-1-AP (STAG2 antibody) at dilution of 1:100 (under 10x lens). This data was developed using the same antibody clone with 19837-1-PBS in a different storage buffer formulation.



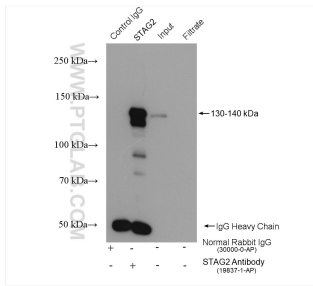
Immunohistochemical analysis of paraffin-embedded human cervical cancer using 19837-1-AP (STAG2 antibody) at dilution of 1:100 (under 40x lens). This data was developed using the same antibody clone with 19837-1-PBS in a different storage buffer formulation.



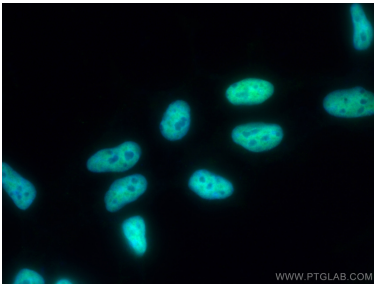
Immunofluorescent analysis of 293 cells, using STAG2 antibody 19837-1-AP at 1:25 dilution and Rhodamine-labeled goat anti-rabbit IgG (red). This data was developed using the same antibody clone with 19837-1-PBS in a different storage buffer formulation.



IP result of anti-STAG2 (IP:19837-1-AP, 4ug; Detection:19837-1-AP 1:3000) with MCF-7 cells lysate 2120 ug. This data was developed using the same antibody clone with 19837-1-PBS in a different storage buffer formulation.



IP result of anti-STAG2 (IP:19837-1-AP, 4ug; Detection:19837-1-AP 1:3000) with U-251 cells lysate 3320 ug. This data was developed using the same antibody clone with 19837-1-PBS in a different storage buffer formulation.



Immunofluorescent analysis of (4% PFA) fixed HEK-293 cells using STAG2 antibody (19837-1-AP) at dilution of 1:200 and CoraLite®488-Conjugated AffiniPure Goat Anti-Rabbit IgG(H+L). This data was developed using the same antibody clone with 19837-1-PBS in a different storage buffer formulation.