

For Research Use Only

TMX2 Polyclonal antibody

Catalog Number: 19838-1-AP

Featured Product



Basic Information

Catalog Number:

19838-1-AP

Size:

150ul, Concentration: 650 ug/ml by Nanodrop;

Source:

Rabbit

Isotype:

IgG

Immunogen Catalog Number:

AG13828

GenBank Accession Number:

BC000666

GeneID (NCBI):

51075

UNIPROT ID:

Q9Y320

Full Name:

thioredoxin-related transmembrane protein 2

Calculated MW:

296 aa, 34 kDa

Observed MW:

30 kDa, 34 kDa

Purification Method:

Antigen affinity purification

Recommended Dilutions:

WB 1:2000-1:10000

IHC 1:20-1:200

Applications

Tested Applications:

WB, IHC, ELISA

Species Specificity:

human, mouse, rat

Note-IHC: suggested antigen retrieval with TE buffer pH 9.0; (*) Alternatively, antigen retrieval may be performed with citrate buffer pH 6.0

Positive Controls:

WB : human placenta tissue, HeLa cells, mouse placenta tissue, mouse testis tissue, rat tissue

IHC : human kidney tissue, human pancreas tissue

Background Information

Thioredoxin-related transmembrane proteins (TMXs) are protein disulfide isomerase (PDI) family members and possess a transmembrane region. TMX2 cDNA was first isolated in 2003, and TMX2 mRNA has been found in a variety of human tissues, with the highest levels in the heart, brain, liver, kidney, and pancreas.

Storage

Storage:

Store at -20°C. Stable for one year after shipment.

Storage Buffer:

PBS with 0.02% sodium azide and 50% glycerol pH 7.3.

Aliquoting is unnecessary for -20°C storage

*** 20ul sizes contain 0.1% BSA

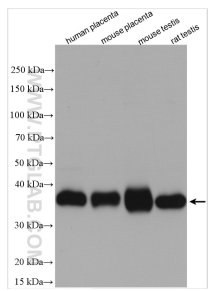
For technical support and original validation data for this product please contact:

T: 1 (888) 4PTGLAB (1-888-478-4522) (toll free in USA), or 1(312) 455-8498 (outside USA)

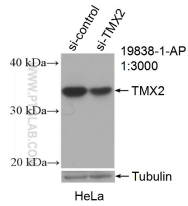
E: proteintech@ptglab.com
W: ptglab.com

This product is exclusively available under Proteintech Group brand and is not available to purchase from any other manufacturer.

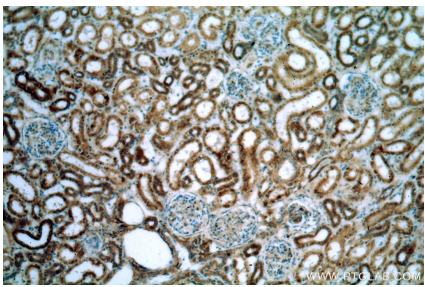
Selected Validation Data



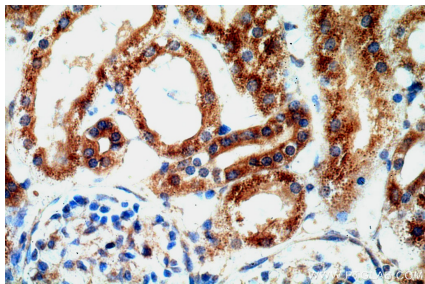
Various lysates were subjected to SDS PAGE followed by western blot with 19838-1-AP (TMX2 antibody) at dilution of 1:5000 incubated at room temperature for 1.5 hours.



WB result of TMX2 antibody (19838-1-AP; 1:3000; incubated at room temperature for 1.5 hours) with sh-Control and sh-TMX2 transfected HeLa cells.



Immunohistochemical analysis of paraffin-embedded human kidney using 19838-1-AP (TMX2 antibody) at dilution of 1:200 (under 10x lens).



Immunohistochemical analysis of paraffin-embedded human kidney using 19838-1-AP (TMX2 antibody) at dilution of 1:200 (under 40x lens).