

For Research Use Only

CENPM Polyclonal antibody

Catalog Number: 19840-1-AP



Basic Information

Catalog Number: 19840-1-AP	GenBank Accession Number: BC000705	Purification Method: Antigen affinity purification
Size: 150ul , Concentration: 300 ug/ml by Nanodrop;	GeneID (NCBI): 79019	Recommended Dilutions: WB 1:500-1:1000 IF/ICC 1:200-1:800
Source: Rabbit	UNIPROT ID: Q9NSP4	
Isotype: IgG	Full Name: centromere protein M	
Immunogen Catalog Number: AG13843	Calculated MW: 180 aa, 20 kDa	
	Observed MW: 20 kDa	

Applications

Tested Applications: WB, IF/ICC, ELISA	Positive Controls:
Species Specificity: human, mouse, rat	WB : HL-60 cells, HeLa cells, Raji cells IF/ICC : NIH/3T3 cells, HeLa cells

Background Information

Centromere protein M (CENPM), also referred as proliferation associated nuclear element 1 (PANE1), is one of the components of a complex that plays a central role in kinetochore protein assembly, mitotic progression and chromosome segregation. The expression of CENPM and centromere assembly should be controlled closely during the cell cycle, and mistakes in this regulation may result in aneuploidy (PMID: 32705259). CENPM has been reported as a novel biomarker of hepatocellular carcinoma, melanoma and bladder cancer (PMID: 31703591).

Storage

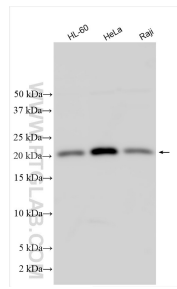
Storage:
Store at -20°C. Stable for one year after shipment.
Storage Buffer:
PBS with 0.02% sodium azide and 50% glycerol pH 7.3.
Aliquoting is unnecessary for -20°C storage

*** 20ul sizes contain 0.1% BSA

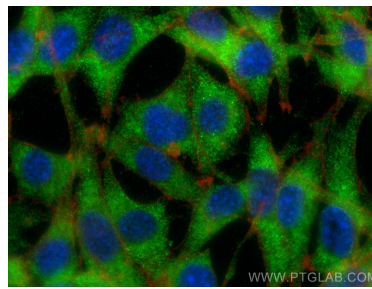
For technical support and original validation data for this product please contact:
T: 1 (888) 4PTGLAB (1-888-478-4522) (toll free in USA), or 1(312) 455-8498 (outside USA)
E: proteintech@ptglab.com
W: ptglab.com

This product is exclusively available under Proteintech Group brand and is not available to purchase from any other manufacturer.

Selected Validation Data



Various lysates were subjected to SDS PAGE followed by western blot with 19840-1-AP (CENPM antibody) at dilution of 1:600 incubated at room temperature for 1.5 hours.



Immunofluorescent analysis of (-20°C Ethanol) fixed NIH/3T3 cells using CENPM antibody (19840-1-AP) at dilution of 1:400 and CoraLite®488-Conjugated Goat Anti-Rabbit IgG(H+L), CL594-phalloidin (red).