

For Research Use Only

KTN1 Polyclonal antibody

Catalog Number: 19841-1-AP

Featured Product

9 Publications



Basic Information

Catalog Number:

19841-1-AP

Size:

150ul, Concentration: 1000 ug/ml by Nanodrop;

Source:

Rabbit

Isotype:

IgG

Immunogen Catalog Number:

AG13854

GenBank Accession Number:

BC117132

GeneID (NCBI):

3895

UNIPROT ID:

Q86UP2

Full Name:

kinectin 1 (kinesin receptor)

Calculated MW:

1357 aa, 156 kDa

Observed MW:

156 kDa

Purification Method:

Antigen affinity purification

Recommended Dilutions:

WB 1:2000-1:16000

IP 0.5-4.0 ug for 1.0-3.0 mg of total protein lysate

IHC 1:50-1:500

IF/ICC 1:200-1:800

Applications

Tested Applications:

WB, IHC, IF/ICC, IP, ELISA

Cited Applications:

WB, IHC, IF, CoIP

Species Specificity:

human, mouse

Cited Species:

human, mouse, monkey

Note-IHC: suggested antigen retrieval with TE buffer pH 9.0; (*) Alternatively, antigen retrieval may be performed with citrate buffer pH 6.0

Positive Controls:

WB : HeLa cells, A549 cells, Jurkat cells, K-562 cells, PC-3 cells, SKOV-3 cells

IP : Jurkat cells,

IHC : human ovary tumor tissue, human bowen disease, human colon tissue, human testis tissue

IF/ICC : HepG2 cells,

Background Information

KTN1/Kinectin is an integral endoplasmic reticulum (ER) membrane protein which acts as dynamic anchor to facilitate ER membrane extension along microtubules. It has been found to bind kinesin, Rho GTPase, and translation elongation factor-1delta and gets involved in organelle motility and protein synthesis.

Notable Publications

Author	Pubmed ID	Journal	Application
Sara Picó	34586830	Sci Transl Med	WB
Pengli Zheng	30030520	Cell Res	IF
Qingzhou Chen	30773365	Curr Biol	WB

Storage

Storage:

Store at -20°C. Stable for one year after shipment.

Storage Buffer:

PBS with 0.02% sodium azide and 50% glycerol

Aliquoting is unnecessary for -20°C storage

*** 20ul sizes contain 0.1% BSA

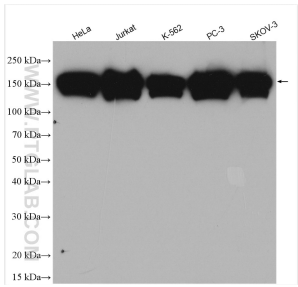
For technical support and original validation data for this product please contact:

T: 1 (888) 4PTGLAB (1-888-478-4522) (toll free in USA), or 1(312) 455-8498 (outside USA)

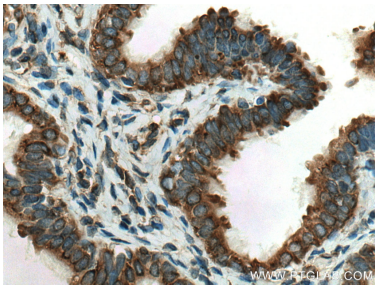
E: proteintech@ptglab.com
W: ptglab.com

This product is exclusively available under Proteintech Group brand and is not available to purchase from any other manufacturer.

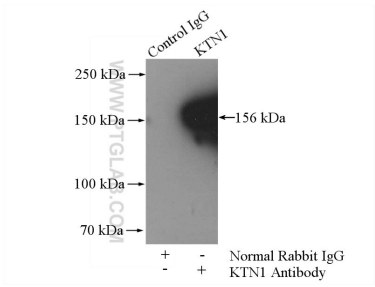
Selected Validation Data



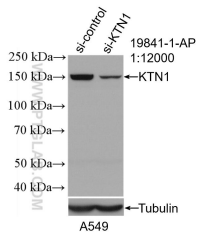
Various lysates were subjected to SDS PAGE followed by western blot with 19841-1-AP (KTN1 antibody) at dilution of 1:8000 incubated at room temperature for 1.5 hours.



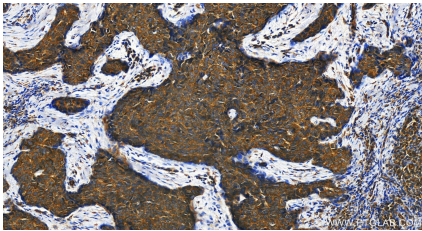
Immunohistochemical analysis of paraffin-embedded human ovary tumor tissue slide using 19841-1-AP (KTN1 antibody) at dilution of 1:200 (under 40x lens). Heat mediated antigen retrieval with Tris-EDTA buffer (pH 9.0).



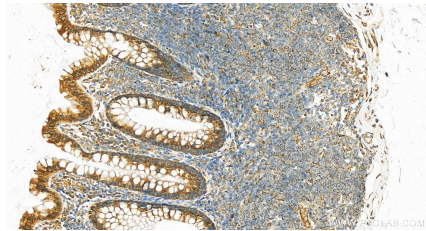
IP result of anti-KTN1 (IP:19841-1-AP, 4ug; Detection:19841-1-AP 1:500) with Jurkat cells lysate 1200ug.



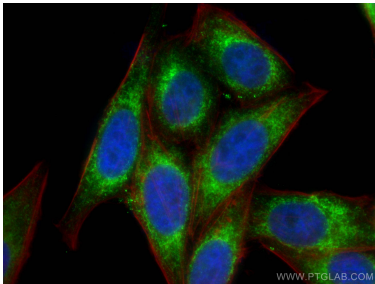
WB result of KTN1 antibody (19841-1-AP; 1:12000; incubated at room temperature for 1.5 hours) with sh-Control and sh-KTN1 transfected A549 cells.



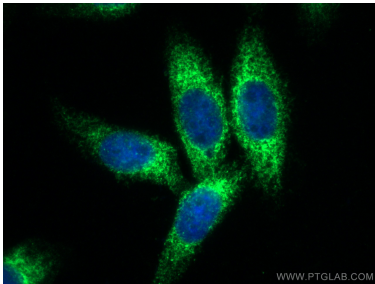
Immunohistochemical analysis of paraffin-embedded human bowen disease slide using 19841-1-AP (KTN1 antibody) at dilution of 1:1600 (under 20x lens). Heat mediated antigen retrieval with Tris-EDTA buffer (pH 9.0).



Immunohistochemical analysis of paraffin-embedded human normal colon slide using 19841-1-AP (KTN1 antibody) at dilution of 1:1600 (under 20x lens). Heat mediated antigen retrieval with Tris-EDTA buffer (pH 9.0).



Immunofluorescent analysis of (4% PFA) fixed HepG2 cells using KTN1 antibody (19841-1-AP) at dilution of 1:400 and CoraLite® 488-Conjugated AffiniPure Goat Anti-Rabbit IgG(H+L), CL594-Phalloidin (red).



Immunofluorescent analysis of (4% PFA) fixed HepG2 cells using KTN1 antibody (19841-1-AP) at dilution of 1:200 and CoraLite® 488-Conjugated AffiniPure Goat Anti-Rabbit IgG(H+L).