

For Research Use Only

SP140L Polyclonal antibody

Catalog Number: 19845-1-AP



Basic Information

Catalog Number:

19845-1-AP

Size:

150ul, Concentration: 550 ug/ml by Nanodrop and 267 ug/ml by Bradford method using BSA as the standard;

Source:

Rabbit

Isotype:

IgG

Immunogen Catalog Number:

AG13894

GenBank Accession Number:

BC004921

GeneID (NCBI):

93349

UNIPROT ID:

Q9H930

Full Name:

SP140 nuclear body protein-like

Calculated MW:

438 aa, 50 kDa

Observed MW:

67-77 kDa

Purification Method:

Antigen affinity purification

Recommended Dilutions:

WB 1:500-1:1000

IP 0.5-4.0 ug for 1.0-3.0 mg of total protein lysate

Applications

Tested Applications:

WB, IP, ELISA

Species Specificity:

human

Positive Controls:

WB : HeLa cells,

IP : HeLa cells,

Storage

Storage:

Store at -20°C. Stable for one year after shipment.

Storage Buffer:

PBS with 0.02% sodium azide and 50% glycerol pH 7.3.

Aliquoting is unnecessary for -20°C storage

***** 20ul sizes contain 0.1% BSA**

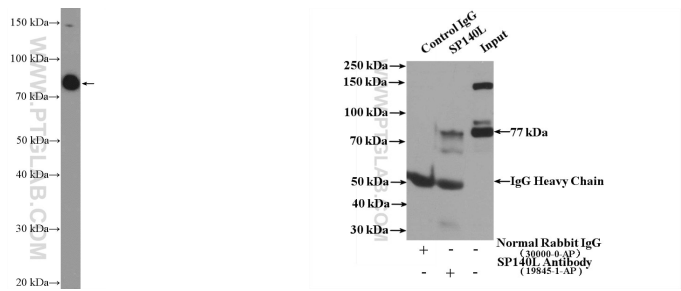
For technical support and original validation data for this product please contact:

T: 1 (888) 4PTGLAB (1-888-478-4522) (toll free in USA), or 1(312) 455-8498 (outside USA)

E: proteintech@ptglab.com
W: ptglab.com

This product is exclusively available under Proteintech Group brand and is not available to purchase from any other manufacturer.

Selected Validation Data



HeLa cells were subjected to SDS PAGE followed by western blot with 19845-1-AP (SP140L Antibody) at dilution of 1:600 incubated at room temperature for 1.5 hours.

IP result of anti-SP140L (IP:19845-1-AP, 4ug; Detection:19845-1-AP 1:500) with HeLa cells lysate 3200ug.