

For Research Use Only

# C14orf166 Polyclonal antibody

Catalog Number: 19848-1-AP

Featured Product

8 Publications



## Basic Information

### Catalog Number:

19848-1-AP

### Size:

150ul, Concentration: 400 ug/ml by Nanodrop and 207 ug/ml by Bradford method using BSA as the standard;

### Source:

Rabbit

### Isotype:

IgG

### Immunogen Catalog Number:

AG13900

### GenBank Accession Number:

BC001722

### GeneID (NCBI):

51637

### UNIPROT ID:

Q9Y224

### Full Name:

chromosome 14 open reading frame 166

### Calculated MW:

244 aa, 28 kDa

### Observed MW:

28 kDa

### Purification Method:

Antigen affinity purification

### Recommended Dilutions:

WB 1:1000-1:6000

IP 0.5-4.0 ug for 1.0-3.0 mg of total protein lysate

IHC 1:50-1:500

IF/ICC 1:50-1:500

## Applications

### Tested Applications:

WB, IHC, IF/ICC, IP, ELISA

### Cited Applications:

WB, IHC, IF

### Species Specificity:

human, mouse, rat

### Cited Species:

human, mouse, rat

**Note-IHC: suggested antigen retrieval with TE buffer pH 9.0; (\*) Alternatively, antigen retrieval may be performed with citrate buffer pH 6.0**

### Positive Controls:

WB: A549 cells, mouse pancreas tissue, mouse lung tissue, Jurkat cells

IP: Jurkat cells,

IHC: human breast cancer tissue, human prostate cancer tissue

IF/ICC: Jurkat cells,

## Background Information

Human CLE/C14orf166 protein is a positive modulator of cellular RNA polymerase. CLE is also shown to interact with the influenza virus polymerase complex and colocalizes with viral ribonucleoproteins, and is required for viral replication. Similarly, CLE is identified as a novel host interacting partners of the mature hepatitis C virus core protein. CLE levels were significantly higher in the serum of patients with PaCa compared with the control group was strongly expressed in tumor cells, suggesting that C14orf166 may be a potential biomarker of pancreatic adenocarcinoma.

## Notable Publications

Author	Pubmed ID	Journal	Application
Lin Yang	25964093	Tumour Biol	WB, IHC
Weijing Zhang	26219895	Tumour Biol	WB, IHC
Teruhiko Suzuki	33503245	Nucleic Acids Res	WB

## Storage

### Storage:

Store at -20°C. Stable for one year after shipment.

### Storage Buffer:

PBS with 0.02% sodium azide and 50% glycerol pH 7.3.

Aliquoting is unnecessary for -20°C storage

\*\*\* 20ul sizes contain 0.1% BSA

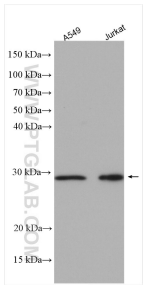
For technical support and original validation data for this product please contact:

T: 1 (888) 4PTGLAB (1-888-478-4522) (toll free in USA), or 1(312) 455-8498 (outside USA)

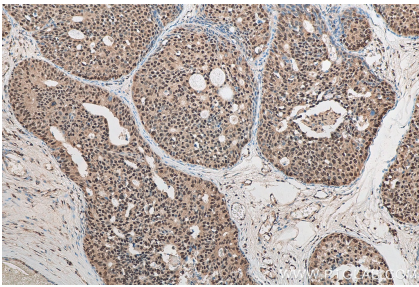
E: proteintech@ptglab.com  
W: ptglab.com

This product is exclusively available under Proteintech Group brand and is not available to purchase from any other manufacturer.

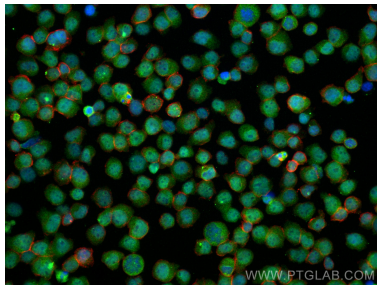
Selected Validation Data



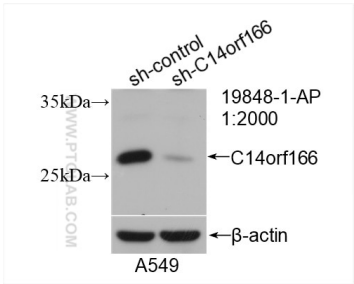
Various lysates were subjected to SDS PAGE followed by western blot with 19848-1-AP (C14orf166 antibody) at dilution of 1:3000 incubated at room temperature for 1.5 hours.



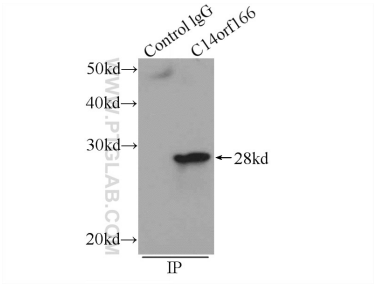
Immunohistochemical analysis of paraffin-embedded human breast cancer tissue slide using 19848-1-AP (C14orf166 antibody) at dilution of 1:200 (under 10x lens). Heat mediated antigen retrieval with Tris-EDTA buffer (pH 9.0).



Immunofluorescent analysis of (4% PFA) fixed Jurkat cells using C14orf166 antibody (19848-1-AP) at dilution of 1:200 and Coralite@488-Conjugated Goat Anti-Rabbit IgG(H+L), CL594-Phalloidin (red).



WB result of C14orf166 antibody (19848-1-AP; 1:2000; incubated at room temperature for 1.5 hours) with sh-Control and sh-C14orf166 transfected A549 cells.



IP result of anti-C14orf166 (IP:19848-1-AP, 3ug; Detection:19848-1-AP 1:700) with Jurkat cells lysate 1080ug.