

For Research Use Only

# PCM1 Polyclonal antibody

Catalog Number: 19856-1-AP

Featured Product

21 Publications



## Basic Information

### Catalog Number:

19856-1-AP

### Size:

150ul, Concentration: 1000 ug/ml by Nanodrop;

### Source:

Rabbit

### Isotype:

IgG

### Immunogen Catalog Number:

AG13929

### GenBank Accession Number:

BC000453

### GeneID (NCBI):

5108

### UNIPROT ID:

Q15154

### Full Name:

pericentriolar material 1

### Calculated MW:

2024 aa, 228 kDa

### Observed MW:

260-280 kDa

### Purification Method:

Antigen affinity purification

### Recommended Dilutions:

WB 1:2000-1:16000

IP 0.5-4.0 ug for 1.0-3.0 mg of total protein lysate

IHC 1:50-1:500

IF/ICC 1:50-1:500

## Applications

### Tested Applications:

WB, IHC, IF/ICC, IP, ELISA

### Cited Applications:

WB, IHC, IF, IP

### Species Specificity:

human, mouse

### Cited Species:

human, mouse

**Note-IHC: suggested antigen retrieval with TE buffer pH 9.0; (\*) Alternatively, antigen retrieval may be performed with citrate buffer pH 6.0**

### Positive Controls:

**WB** : HEK-293 cells, NIH/3T3 cells, HT-1080 cells, HeLa cells

**IP** : HeLa cells,

**IHC** : human tonsillitis tissue, mouse testis tissue

**IF/ICC** : HepG2 cells, NIH/3T3 cells, HeLa cells

## Background Information

Pericentriolar material 1 (PCM1) is a component of centriolar satellites, which are electron dense granules scattered around centrosomes (PMID: 10579718). PCM1 is required for centrosome assembly and function. It acts as a scaffold to target several proteins to the centrosome in a dynein motor-dependent manner and regulate microtubular dynamics (PMID:18762586; 12403812). It is also involved in the biogenesis of cilia (PMID: 18772192). Chromosomal aberrations involving PCM1 gene are associated with papillary thyroid carcinomas and a variety of hematological malignancies, including atypical chronic myeloid leukemia and T-cell lymphoma. (PMID: 10980597; 16091753; 15805263; 16424865).

## Notable Publications

Author	Pubmed ID	Journal	Application
Hsuan Cheng	36314725	EMBO Rep	IF
Deniz Conkar	31582766	Sci Rep	WB
Tianyu Wu	36395215	Science	IF

## Storage

### Storage:

Store at -20°C. Stable for one year after shipment.

### Storage Buffer:

PBS with 0.02% sodium azide and 50% glycerol pH 7.3.

Aliquoting is unnecessary for -20°C storage

\*\*\* 20ul sizes contain 0.1% BSA

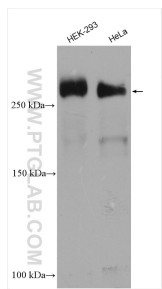
For technical support and original validation data for this product please contact:

T: 1 (888) 4PTGLAB (1-888-478-4522) (toll free in USA), or 1(312) 455-8498 (outside USA)

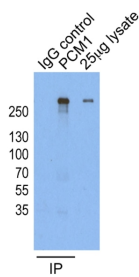
E: proteintech@ptglab.com  
W: ptglab.com

This product is exclusively available under Proteintech Group brand and is not available to purchase from any other manufacturer.

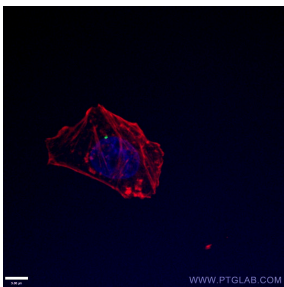
## Selected Validation Data



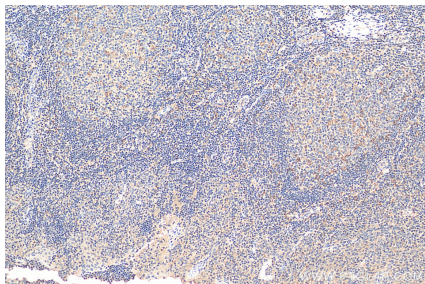
Various lysates were subjected to SDS PAGE followed by western blot with 19856-1-AP (PCM1 antibody) at dilution of 1:8000 incubated at room temperature for 1.5 hours.



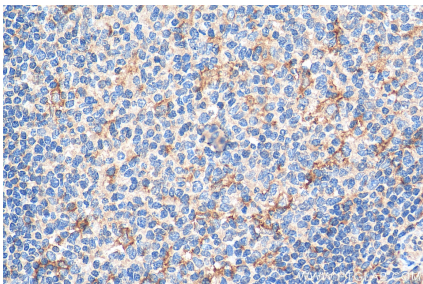
IP result of anti-PCM1 (19856-1-AP for IP and Detection) with HeLa cells.



Immunofluorescent analysis of (4% PFA) fixed HepG2 cells using 19856-1-AP (PCM1 antibody) at dilution of 1:100 and CoraLite488-Conjugated Goat Anti-Rabbit IgG(H+L).



Immunohistochemical analysis of paraffin-embedded human tonsillitis tissue slide using 19856-1-AP (PCM1 antibody) at dilution of 1:200 (under 10x lens). Heat mediated antigen retrieval with Tris-EDTA buffer (pH 9.0).



Immunohistochemical analysis of paraffin-embedded human tonsillitis tissue slide using 19856-1-AP (PCM1 antibody) at dilution of 1:200 (under 40x lens). Heat mediated antigen retrieval with Tris-EDTA buffer (pH 9.0).