

For Research Use Only

Spermidine synthase Polyclonal antibody



Catalog Number: 19858-1-AP

12 Publications

Basic Information

Catalog Number: 19858-1-AP	GenBank Accession Number: BC000309	Purification Method: Antigen affinity purification
Size: 150ul , Concentration: 550 µg/ml by Nanodrop;	GeneID (NCBI): 6723	Recommended Dilutions: WB 1:500-1:3000 IP 0.5-4.0 ug for IP and 1:500-1:1000 for WB
Source: Rabbit	Full Name: spermidine synthase	IHC 1:250-1:1000
Isotype: IgG	Calculated MW: 302 aa, 34 kDa	IF 1:50-1:500
Immunogen Catalog Number: AG13936	Observed MW: 34 kDa	

Applications

Tested Applications:
IF, IHC, IP, WB, ELISA

Cited Applications:
IF, IHC, WB

Species Specificity:
human, mouse, rat

Cited Species:
human, mouse

Positive Controls:

WB : HeLa cells, LNCaP cells, HepG2 cells, PC-3 cells, mouse liver tissue, rat liver tissue, RAW 264.7 cells, mouse brain tissue

IP : mouse liver tissue,

IHC : human kidney tissue, human liver cancer tissue

IF : HepG2 cells,

Note-IHC: suggested antigen retrieval with TE buffer pH 9.0; (*) Alternatively, antigen retrieval may be performed with citrate buffer pH 6.0

Background Information

Spermidine synthase is an enzyme that catalyzes the transfer of the propylamine group from S-adenosylmethioninamine to putrescine in the biosynthesis of spermidine. The polyamines putrescine, spermine, and spermidine are ubiquitous polycationic mediators of cell growth and differentiation. Spermidine synthases catalyze the production of the linear triamine, spermidine, from putrescine. They utilize decarboxylated S-adenosylmethionine (dc-SAM), a universal cofactor of aminopropyltransferases, as a donor of the aminopropyl moiety (PMID:31134111).

Notable Publications

Author	Pubmed ID	Journal	Application
Takeshi Uemura	32995657	Heliyon	WB
Hongming Miao	27189574	Nat Commun	WB,IF
Fumihiko Urabe	32558033	Cancer Sci	WB

Storage

Storage:

Store at -20°C. Stable for one year after shipment.

Storage Buffer:

PBS with 0.02% sodium azide and 50% glycerol pH 7.3.

Aliquoting is unnecessary for -20°C storage

*** 20ul sizes contain 0.1% BSA

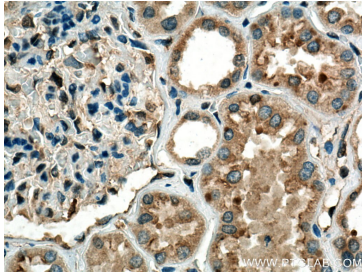
For technical support and original validation data for this product please contact:

T: 1 (888) 4PTGLAB (1-888-478-4522) (toll free in USA), or 1(312) 455-8498 (outside USA)

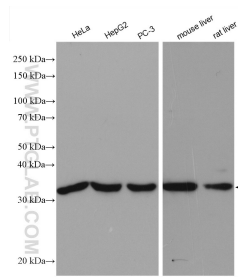
E: proteintech@ptglab.com
W: ptglab.com

This product is exclusively available under Proteintech Group brand and is not available to purchase from any other manufacturer.

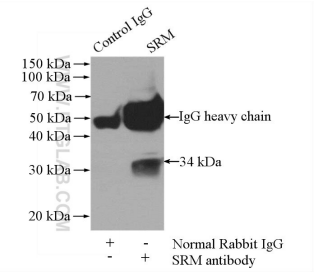
Selected Validation Data



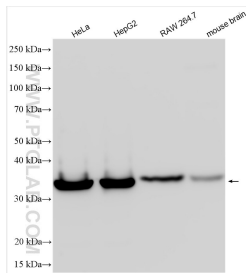
Immunohistochemical analysis of paraffin-embedded human kidney tissue slide using 19858-1-AP (Spermidine synthase antibody) at dilution of 1:500 (under 40x lens). Heat mediated antigen retrieval with Tris-EDTA buffer (pH 9.0).



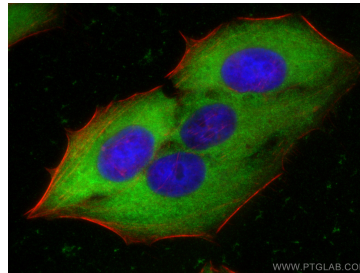
Various lysates were subjected to SDS PAGE followed by western blot with 19858-1-AP (Spermidine synthase antibody) at dilution of 1:1500 incubated at room temperature for 1.5 hours.



IP Result of anti-Spermidine synthase (IP:19858-1-AP, 4ug; Detection:19858-1-AP 1:500) with mouse liver tissue lysate 4000ug.



HeLa cells were subjected to SDS PAGE followed by western blot with 19858-1-AP (Spermidine synthase antibody) at dilution of 1:6000 incubated at room temperature for 1.5 hours.



Immunofluorescent analysis of (-20°C Ethanol) fixed HepG2 cells using Spermidine synthase antibody (19858-1-AP) at dilution of 1:200 and CoraLite® 488-Conjugated AffiniPure Goat Anti-Rabbit IgG(H+L), CL594-phalloidin (red).