

For Research Use Only

Alpha galactosidase A Polyclonal antibody

Catalog Number: 19877-1-AP

1 Publications



Basic Information

Catalog Number: 19877-1-AP	GenBank Accession Number: BC002689	Purification Method: Antigen affinity purification
Size: 150ul , Concentration: 500 µg/ml by Nanodrop and 287 µg/ml by Bradford method using BSA as the standard;	GeneID (NCBI): 2717	Recommended Dilutions: WB 1:500-1:3000 IF/ICC 1:10-1:100
Source: Rabbit	UNIPROT ID: P06280	
Isotype: IgG	Full Name: galactosidase, alpha	
Immunogen Catalog Number: AG7505	Calculated MW: 49 kDa	
	Observed MW: 49 kDa	

Applications

Tested Applications: WB, IF/ICC, ELISA	Positive Controls: WB : HEK-293 cells, IF/ICC : HepG2 cells,
Cited Applications: WB	
Species Specificity: human, mouse, rat	
Cited Species: human	

Background Information

GLA, also named as Melibiase, Agalsidas and Alpha-galactosidase A, Belongs to the glycosyl hydrolase 27 family. It hydrolysis of terminal, non-reducing alpha-D-galactose residues in alpha-D-galactosides, including galactose oligosaccharides, galactomannans and galactolipids. Fabry disease is an X-linked lysosomal storage disorder resulting from the deficient activity of GLA. Enzyme replacement therapy (ERT) with GLA is currently the most effective therapeutic strategy for patients with Fabry disease, a lysosomal storage disease.

Notable Publications

Author	Pubmed ID	Journal	Application
Xin Zhao	32398959	Int J Biol Sci	WB

Storage

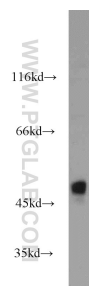
Storage:
Store at -20°C. Stable for one year after shipment.
Storage Buffer:
PBS with 0.02% sodium azide and 50% glycerol pH 7.3.
Aliquoting is unnecessary for -20°C storage

*** 20ul sizes contain 0.1% BSA

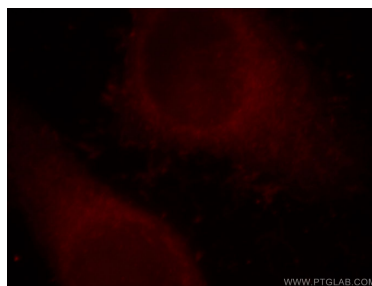
For technical support and original validation data for this product please contact:
T: 1 (888) 4PTGLAB (1-888-478-4522) (toll free in USA), or 1(312) 455-8498 (outside USA)
E: proteintech@ptglab.com
W: ptglab.com

This product is exclusively available under Proteintech Group brand and is not available to purchase from any other manufacturer.

Selected Validation Data



HEK-293 cells were subjected to SDS PAGE followed by western blot with 19877-1-AP (Alpha galactosidase A antibody) at dilution of 1:1500 incubated at room temperature for 1.5 hours.



Immunofluorescent analysis of HepG2 cells, using GLA antibody 19877-1-AP at 1:25 dilution and Rhodamine-labeled goat anti-rabbit IgG (red).