

For Research Use Only

ASUN Polyclonal antibody

Catalog Number: 19892-1-AP

4 Publications



Basic Information

Catalog Number:

19892-1-AP

Size:

150ul, Concentration: 500 ug/ml by Nanodrop and 220 ug/ml by Bradford method using BSA as the standard;

Source:

Rabbit

Isotype:

IgG

Immunogen Catalog Number:

AG13727

GenBank Accession Number:

BC003081

GeneID (NCBI):

55726

UNIPROT ID:

Q9NVM9

Full Name:

chromosome 12 open reading frame 11

Calculated MW:

706 aa, 80 kDa

Observed MW:

70-80 kDa

Purification Method:

Antigen affinity purification

Recommended Dilutions:

WB 1:5000-1:50000

IP 0.5-4.0 ug for 1.0-3.0 mg of total protein lysate

IHC 1:20-1:200

IF/ICC 1:200-1:800

Applications

Tested Applications:

WB, IHC, IF/ICC, IP, ELISA

Cited Applications:

WB, IF, IP, ChIP

Species Specificity:

human

Cited Species:

human

Note-IHC: suggested antigen retrieval with TE buffer pH 9.0; (*) Alternatively, antigen retrieval may be performed with citrate buffer pH 6.0

Positive Controls:

WB: HeLa cells, MCF-7 cells, Jurkat cells

IP: MCF-7 cells,

IHC: human cervical cancer tissue, human testis tissue

IF/ICC: MCF-7 cells,

Background Information

Asunder (ASUN) is a conserved protein that has been reported as a critical regulator of dynein localization during *Drosophila* spermatogenesis (PMID: 19357193). Mammalian and *Drosophila* ASUN proteins revealed that they are 43% identical and 64% similar. Human ASUN (also known as GCT1 or C12ORF11) promotes dynein recruitment and centrosomal tethering to the nucleus at mitotic entry (PMID: 23097494).

Notable Publications

Author	Pubmed ID	Journal	Application
Lauren G. Mascibroda	36229431	Nat Commun	WB
Bernd Stadelmayer	25410209	Nat Commun	ChIP, IP, WB
Hagai Marmor-Kollet	33217318	Mol Cell	IF

Storage

Storage:

Store at -20°C. Stable for one year after shipment.

Storage Buffer:

PBS with 0.02% sodium azide and 50% glycerol pH 7.3.

Aliquoting is unnecessary for -20°C storage

*** 20ul sizes contain 0.1% BSA

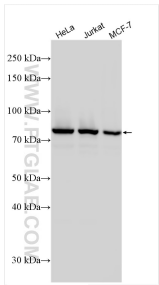
For technical support and original validation data for this product please contact:

T: 1 (888) 4PTGLAB (1-888-478-4522) (toll free in USA), or 1(312) 455-8498 (outside USA)

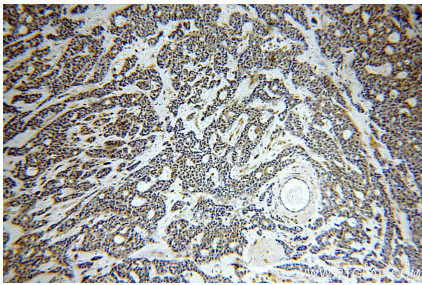
E: proteintech@ptglab.com
W: ptglab.com

This product is exclusively available under Proteintech Group brand and is not available to purchase from any other manufacturer.

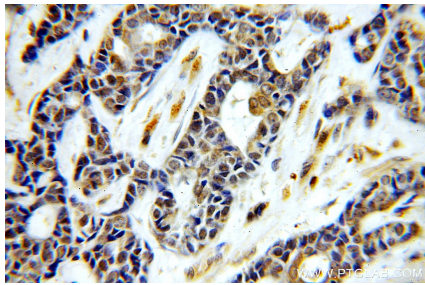
Selected Validation Data



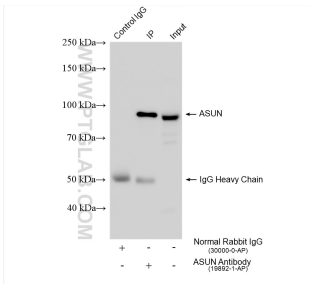
Various lysates were subjected to SDS PAGE followed by western blot with 19892-1-AP (ASUN antibody) at dilution of 1:10000 incubated at room temperature for 1.5 hours.



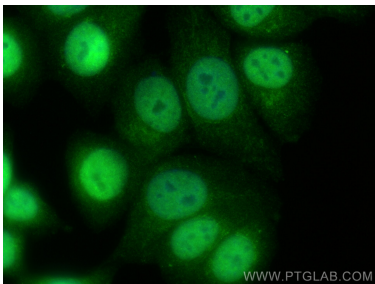
Immunohistochemical analysis of paraffin-embedded human cervical cancer using 19892-1-AP (ASUN antibody) at dilution of 1:100 (under 10x lens).



Immunohistochemical analysis of paraffin-embedded human cervical cancer using 19892-1-AP (ASUN antibody) at dilution of 1:100 (under 40x lens).



IP result of anti-ASUN (IP:19892-1-AP, 4ug; Detection:19892-1-AP 1:8000) with MCF-7 cells lysate 1400 ug.



Immunofluorescent analysis of (4% PFA) fixed MCF-7 cells using ASUN antibody (19892-1-AP) at dilution of 1:400 and Multi-rAb Coralite® Plus 488-Goat Anti-Rabbit Recombinant Secondary Antibody (H+L) (RGAR002).