

For Research Use Only

RFWD3 Polyclonal antibody, PBS Only

Catalog Number: 19893-1-PBS

Featured Product



Basic Information

Catalog Number:

19893-1-PBS

Size:

100ug, Concentration: 1 mg/ml by Nanodrop;

Source:

Rabbit

Isotype:

IgG

Immunogen Catalog Number:

AG13728

GenBank Accession Number:

BC002574

GeneID (NCBI):

55159

UNIPROT ID:

Q6PCD5

Full Name:

ring finger and WD repeat domain 3

Calculated MW:

774 aa, 85 kDa

Observed MW:

85 kDa

Purification Method:

Antigen affinity purification

Applications

Tested Applications:

WB, IHC, IF/ICC, Indirect ELISA

Species Specificity:

human, mouse, rat

Background Information

RFWD3, also named as RNF201, is a E3 ubiquitin-protein ligase that mediates the ubiquitination of p53/TP53 in the late response to DNA damage, and acts as a positive regulator of p53/TP53 stability, thereby regulating the G1/S DNA damage checkpoint. RFWD3 may act by catalyzing the formation of short polyubiquitin chains on p53/TP53 that are not targeted to the proteasome. In response to ionizing radiation, It interacts with MDM2 and enhances p53/TP53 ubiquitination, possibly by restricting MDM2 from extending polyubiquitin chains on ubiquitinated p53/TP53.(PMID: 20173098) From BLAST result, this antibody is specific to RFWD3. 45kd and 55kd maybe spliceosome of RFWD3.

Storage

Storage:

Store at -80°C.

Storage Buffer:

PBS only, pH7.3

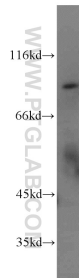
For technical support and original validation data for this product please contact:

T: 1 (888) 4PTGLAB (1-888-478-4522) (toll free in USA), or 1(312) 455-8498 (outside USA)

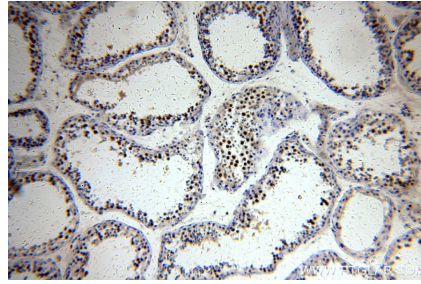
E: proteintech@ptglab.com
W: ptglab.com

This product is exclusively available under Proteintech Group brand and is not available to purchase from any other manufacturer.

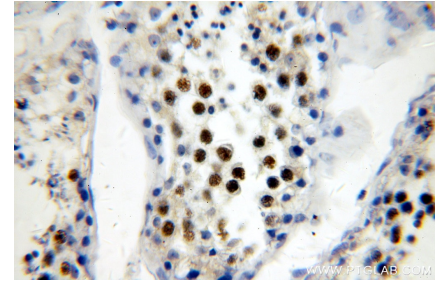
Selected Validation Data



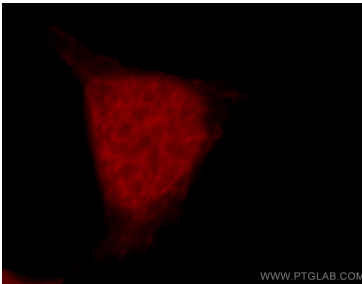
mouse lung tissue were subjected to SDS PAGE followed by western blot with 19893-1-AP (RFWD3 antibody) at dilution of 1:1000 incubated at room temperature for 1.5 hours. This data was developed using the same antibody clone with 19893-1-PBS in a different storage buffer formulation.



Immunohistochemical analysis of paraffin-embedded human testis using 19893-1-AP (RFWD3 antibody) at dilution of 1:400 (under 10x lens). This data was developed using the same antibody clone with 19893-1-PBS in a different storage buffer formulation.



Immunohistochemical analysis of paraffin-embedded human testis using 19893-1-AP (RFWD3 antibody) at dilution of 1:400 (under 40x lens). This data was developed using the same antibody clone with 19893-1-PBS in a different storage buffer formulation.



Immunofluorescent analysis of 293 cells, using RFWD3 antibody 19893-1-AP at 1:25 dilution and Rhodamine-labeled goat anti-rabbit IgG (red). This data was developed using the same antibody clone with 19893-1-PBS in a different storage buffer formulation.