

For Research Use Only

SI-CLP,CHID1 Polyclonal antibody

Catalog Number:19900-1-AP



Basic Information

Catalog Number: 19900-1-AP	GenBank Accession Number: BC000001	Purification Method: Antigen affinity purification
Size: 150ul , Concentration: 170 ug/ml by Nanodrop and 213 ug/ml by Bradford method using BSA as the standard;	GeneID (NCBI): 66005	Recommended Dilutions: WB 1:500-1:1000
Source: Rabbit	UNIPROT ID: Q9BWS9	
Isotype: IgG	Full Name: chitinase domain containing 1	
Immunogen Catalog Number: AG13806	Calculated MW: 393 aa, 45 kDa	
	Observed MW: 42-48 kDa	

Applications

Tested Applications: WB, ELISA	Positive Controls: WB : HEK-293 cells, U-251 cells
Species Specificity: human	

Background Information

CHID1 (chitinase domain containing protein 1) is a member of the Glyco_18 domain-containing proteins family, expressed by type 2 macrophages upon their stimulation with interleukin (IL)-4 and glucocorticoids. Expression of CHID1 is documented for TAMs in various tumors, but its role in tumor development remains unclear. (PMID: 33466316)

Storage

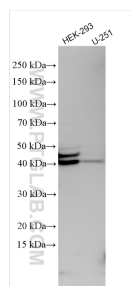
Storage:
Store at -20°C. Stable for one year after shipment.
Storage Buffer:
PBS with 0.02% sodium azide and 50% glycerol pH 7.3.
Aliquoting is unnecessary for -20°C storage

*** 20ul sizes contain 0.1% BSA

For technical support and original validation data for this product please contact:
T: 1 (888) 4PTGLAB (1-888-478-4522) (toll free in USA), or 1(312) 455-8498 (outside USA)
E: proteintech@ptglab.com
W: ptglab.com

This product is exclusively available under Proteintech Group brand and is not available to purchase from any other manufacturer.

Selected Validation Data



HEK-293 cells were subjected to SDS PAGE followed by western blot with 19900-1-AP (SI-CLP,CHID1 antibody) at dilution of 1:800 incubated at room temperature for 1.5 hours.