

For Research Use Only

GULP1 Polyclonal antibody

Catalog Number: 19902-1-AP **1 Publications**



Basic Information

Catalog Number: 19902-1-AP	GenBank Accession Number: BC001103	Purification Method: Antigen affinity purification
Size: 150ul , Concentration: 450 µg/ml by Nanodrop;	GeneID (NCBI): 51454	Recommended Dilutions: WB 1:1000-1:8000
Source: Rabbit	Full Name: GULP, engulfment adaptor PTB domain containing 1	
Isotype: IgG	Calculated MW: 167 aa, 19 kDa	
Immunogen Catalog Number: AG13829	Observed MW: 34 kDa	

Applications

Tested Applications: WB, ELISA	Positive Controls: WB : HEK-293 cells, HeLa cells, NIH/3T3 cells, HepG2 cells
Cited Applications: IHC, WB	
Species Specificity: human, mouse	
Cited Species: human	

Background Information

Notable Publications

Author	Pubmed ID	Journal	Application
Dong Yan	37573356	Cell Death Dis	WB,IHC

Storage

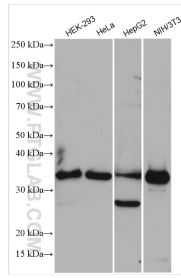
Storage:
Store at -20°C. Stable for one year after shipment.
Storage Buffer:
PBS with 0.02% sodium azide and 50% glycerol pH 7.3.
Aliquoting is unnecessary for -20°C storage

*** 20ul sizes contain 0.1% BSA

For technical support and original validation data for this product please contact:
T: 1 (888) 4PTGLAB (1-888-478-4522) (toll free in USA), or 1(312) 455-8498 (outside USA)
E: proteintech@ptglab.com
W: ptglab.com

This product is exclusively available under Proteintech Group brand and is not available to purchase from any other manufacturer.

Selected Validation Data



Various lysates were subjected to SDS PAGE followed by western blot with 19902-1-AP (GULP1 antibody) at dilution of 1:4000 incubated at room temperature for 1.5 hours.