

For Research Use Only

SDH5 Polyclonal antibody

Catalog Number: 19906-1-AP

4 Publications



Basic Information

Catalog Number:

19906-1-AP

Size:

150ul, Concentration: 600 ug/ml by Nanodrop;

Source:

Rabbit

Isotype:

IgG

Immunogen Catalog Number:

AG13893

GenBank Accession Number:

BC002331

GeneID (NCBI):

54949

UNIPROT ID:

Q9NX18

Full Name:

chromosome 11 open reading frame 79

Calculated MW:

166 aa, 20 kDa

Observed MW:

15 kDa

Purification Method:

Antigen affinity purification

Recommended Dilutions:

WB 1:500-1:3000

IHC 1:20-1:200

IF/ICC 1:50-1:500

Applications

Tested Applications:

WB, IHC, IF/ICC, ELISA

Cited Applications:

WB, IHC, IF

Species Specificity:

human, mouse, rat

Cited Species:

human, mouse

Note-IHC: suggested antigen retrieval with TE buffer pH 9.0; (*) Alternatively, antigen retrieval may be performed with citrate buffer pH 6.0

Positive Controls:

WB : HEK-293 cells, HeLa cells

IHC : human testis tissue, human skin cancer tissue

IF/ICC : HeLa cells,

Background Information

SDH5, also named asC11orf79, SDHAF2 and SDHAF2, is a mitochondrial protein needed for the flavination of a succinate dehydrogenase complex subunit required for activity of the complex. SDH5 has been shown to be mutated in patients with paragangliomas, also known as familial non-chromaffin paragangliomas type 2. Catalog#19906-1-AP is a rabbit polyclonal antibody raised against the full-length of human SDH5.

Notable Publications

Author	Pubmed ID	Journal	Application
Yuanzhen Ma	30703481	Free Radic Biol Med	WB
Wenqiang Liu	39586503	Biochim Biophys Acta Mol Basis Dis	WB,IHC,IF
Wencheng Di	38403920	Cell Biochem Funct	WB

Storage

Storage:

Store at -20°C. Stable for one year after shipment.

Storage Buffer:

PBS with 0.02% sodium azide and 50% glycerol, pH7.3

Aliquoting is unnecessary for -20°C storage

*** 20ul sizes contain 0.1% BSA

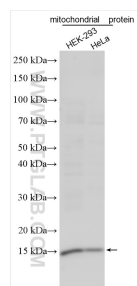
For technical support and original validation data for this product please contact:

T: 1 (888) 4PTGLAB (1-888-478-4522) (toll free in USA), or 1(312) 455-8498 (outside USA)

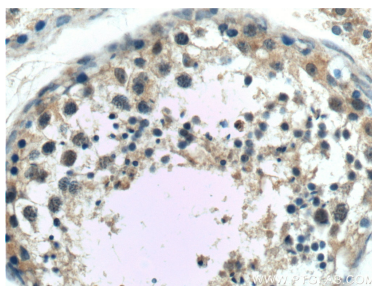
E: proteintech@ptglab.com
W: ptglab.com

This product is exclusively available under Proteintech Group brand and is not available to purchase from any other manufacturer.

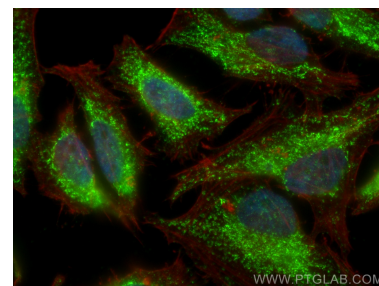
Selected Validation Data



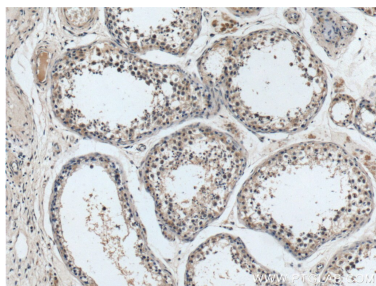
Various lysates were subjected to SDS PAGE followed by western blot with 19906-1-AP (SDH5 antibody) at dilution of 1:1500 incubated at room temperature for 1.5 hours.



Immunohistochemical analysis of paraffin-embedded human testis tissue slide using 19906-1-AP (SDH5 Antibody) at dilution of 1:50 (under 40x lens).



Immunofluorescent analysis of (4% PFA) fixed HeLa cells using SDH5 antibody (19906-1-AP) at dilution of 1:200 and CoraLite®488-Conjugated Goat Anti-Rabbit IgG(H+L), CL594-Phalloidin (red).



Immunohistochemical analysis of paraffin-embedded human testis tissue slide using 19906-1-AP (SDH5 Antibody) at dilution of 1:50 (under 10x lens).