

For Research Use Only

# RGP1 Polyclonal antibody

Catalog Number:19908-1-AP



## Basic Information

**Catalog Number:**

19908-1-AP

**Size:**

150ul , Concentration: 350 ug/ml by Nanodrop;

**Source:**

Rabbit

**Isotype:**

IgG

**Immunogen Catalog Number:**

AG13902

**GenBank Accession Number:**

BC001725

**GeneID (NCBI):**

9827

**UNIPROT ID:**

Q92546

**Full Name:**

RGP1 retrograde golgi transport homolog (S. cerevisiae)

**Calculated MW:**

391 aa, 42 kDa

**Observed MW:**

42 kDa

**Purification Method:**

Antigen affinity purification

**Recommended Dilutions:**

WB: 1:1000-1:4000

## Applications

**Tested Applications:**

WB, ELISA

**Species Specificity:**

human

**Positive Controls:**

WB : MG-63 cells, THP-1 cells, U2OS cells

## Storage

**Storage:**

Store at -20°C. Stable for one year after shipment.

**Storage Buffer:**

PBS with 0.02% sodium azide and 50% glycerol, pH7.3

Aliquoting is unnecessary for -20°C storage

\*\*\* 20ul sizes contain 0.1% BSA

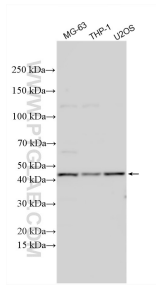
For technical support and original validation data for this product please contact:

T: 1 (888) 4PTGLAB (1-888-478-4522) (toll free in USA), or 1(312) 455-8498 (outside USA)

E: [proteintech@ptglab.com](mailto:proteintech@ptglab.com)  
W: [ptglab.com](http://ptglab.com)

This product is exclusively available under Proteintech Group brand and is not available to purchase from any other manufacturer.

## Selected Validation Data



Various lysates were subjected to SDS PAGE followed by western blot with 19908-1-AP (RGP1 antibody) at dilution of 1:2000 incubated at room temperature for 1.5 hours.