

For Research Use Only

SLC10A3 Polyclonal antibody

Catalog Number: 19909-1-AP

2 Publications



Basic Information

Catalog Number: 19909-1-AP	GenBank Accession Number: BC004966	Purification Method: Antigen affinity purification
Size: 150ul, Concentration: 200 ug/ml by Nanodrop and 133 ug/ml by Bradford method using BSA as the standard;	GeneID (NCBI): 8273	Recommended Dilutions: WB 1:500-1:1000 IHC 1:20-1:200 IF/ICC 1:200-1:800
Source: Rabbit	UNIPROT ID: P09131	
Isotype: IgG	Full Name: solute carrier family 10 (sodium/bile acid cotransporter family), member 3	
Immunogen Catalog Number: AG13915	Calculated MW: 477 aa, 50 kDa	
	Observed MW: 50 kDa, 48 kDa	

Applications

Tested Applications: WB, IHC, IF/ICC, ELISA	Positive Controls: WB : 37°C incubated A549 cells, IHC : human pancreas tissue, IF/ICC : HeLa cells,
Cited Applications: WB, IHC	
Species Specificity: human, mouse	
Cited Species: human	
Note-IHC: suggested antigen retrieval with TE buffer pH 9.0; (*) Alternatively, antigen retrieval may be performed with citrate buffer pH 6.0	

Background Information

The solute carrier (SLC) family 10 (SLC10) encodes protein for transporters of various agents, bile acids and steroidal hormones, and SLC10A3 belongs to the SLC10 family. SLC10A3 consists of 477 amino acids, with a calculated mass of approximately 50 kDa.

Notable Publications

Author	Pubmed ID	Journal	Application
Pu Xing	38890691	Cancer Cell Int	WB, IHC
Bangting Wang	38178258	Eur J Med Res	IHC

Storage

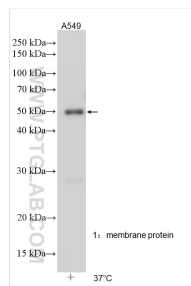
Storage:
Store at -20°C. Stable for one year after shipment.
Storage Buffer:
PBS with 0.02% sodium azide and 50% glycerol pH 7.3.
Aliquoting is unnecessary for -20°C storage

*** 20ul sizes contain 0.1% BSA

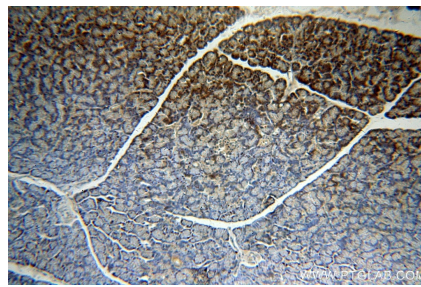
For technical support and original validation data for this product please contact:
T: 1 (888) 4PTGLAB (1-888-478-4522) (toll free in USA), or 1(312) 455-8498 (outside USA)
E: proteintech@ptglab.com
W: ptglab.com

This product is exclusively available under Proteintech Group brand and is not available to purchase from any other manufacturer.

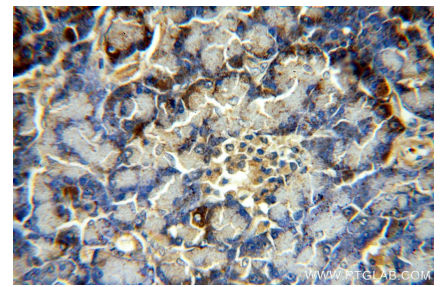
Selected Validation Data



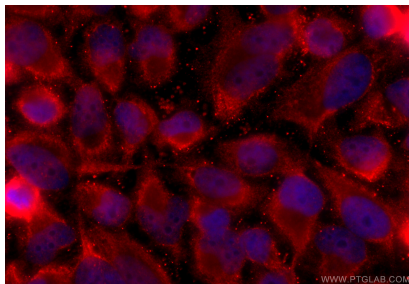
Various lysates were subjected to SDS PAGE followed by western blot with 19909-1-AP (SLC10A3 antibody) at dilution of 1:800 incubated at room temperature for 1.5 hours.



Immunohistochemical analysis of paraffin-embedded human pancreas using 19909-1-AP (SLC10A3 antibody) at dilution of 1:50 (under 10x lens).



Immunohistochemical analysis of paraffin-embedded human pancreas using 19909-1-AP (SLC10A3 antibody) at dilution of 1:50 (under 40x lens).



Immunofluorescent analysis of (-20°C Ethanol) fixed HeLa cells using SLC10A3 antibody (19909-1-AP) at dilution of 1:400 and CoraLite®594-Conjugated Goat Anti-Rabbit IgG(H+L) (SA00013-4).