

For Research Use Only

PPDPF Polyclonal antibody

Catalog Number: 19912-1-AP

6 Publications



Basic Information

Catalog Number:

19912-1-AP

Size:

150ul, Concentration: 450 ug/ml by Nanodrop and 193 ug/ml by Bradford method using BSA as the standard;

Source:

Rabbit

Isotype:

IgG

Immunogen Catalog Number:

AG13740

GenBank Accession Number:

BC002531

GeneID (NCBI):

79144

UNIPROT ID:

Q9H3Y8

Full Name:

chromosome 20 open reading frame

149

Calculated MW:

114 aa, 12 kDa

Observed MW:

10-12 kDa

Purification Method:

Antigen affinity purification

Recommended Dilutions:

WB 1:500-1:1000

IHC 1:50-1:500

IF/ICC 1:200-1:800

Applications

Tested Applications:

WB, IHC, IF/ICC, ELISA

Cited Applications:

WB, IHC, IF

Species Specificity:

human, mouse

Cited Species:

human, mouse

Note-IHC: suggested antigen retrieval with TE buffer pH 9.0; (*) Alternatively, antigen retrieval may be performed with citrate buffer pH 6.0

Positive Controls:

WB: MCF-7 cells, mouse pancreas tissue

IHC: human colon cancer tissue, human pancreas tissue

IF/ICC: U2OS cells,

Background Information

Pancreatic progenitor cell differentiation and proliferation factor (PPDPF), also known as C20orf149 and EXPDF, belongs to the PPDPF family. PPDPF is a key regulator for the development of exocrine pancreas. PPDPF is highly expressed in various cancers, including HCC, colorectal cancer, prostate cancer, etc (PMID: 34031390, 34975328, 37027301). PPDPF consists of 114 amino acids and the molecular weight is 12 kDa.

Notable Publications

Author	Pubmed ID	Journal	Application
Marcel Morgenstern	34800366	Cell Metab	
Yangjiong Xiao	34041032	Front Oncol	WB
Mu Yun	34975328	Int J Biol Sci	WB

Storage

Storage:

Store at -20°C. Stable for one year after shipment.

Storage Buffer:

PBS with 0.02% sodium azide and 50% glycerol pH 7.3.

Aliquoting is unnecessary for -20°C storage

*** 20ul sizes contain 0.1% BSA

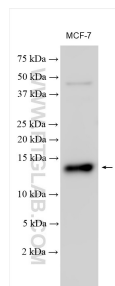
For technical support and original validation data for this product please contact:

T: 1 (888) 4PTGLAB (1-888-478-4522) (toll free in USA), or 1(312) 455-8498 (outside USA)

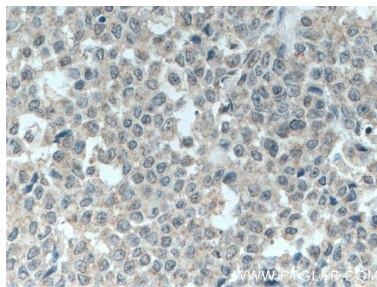
E: proteintech@ptglab.com
W: ptglab.com

This product is exclusively available under Proteintech Group brand and is not available to purchase from any other manufacturer.

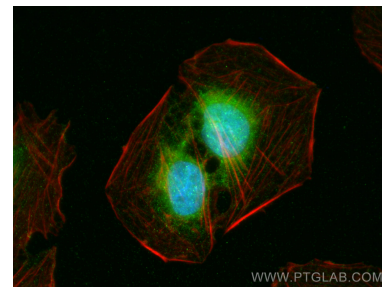
Selected Validation Data



Various lysates were subjected to SDS PAGE followed by western blot with 19912-1-AP (PPDPF antibody) at dilution of 1:500 incubated at room temperature for 1.5 hours.



Immunohistochemical analysis of paraffin-embedded human colon cancer tissue slide using 19912-1-AP (C20orf149 antibody) at dilution of 1:200 (under 40x lens. Heat mediated antigen retrieval with Tris-EDTA buffer (pH 9.0).



Immunofluorescent analysis of (4% PFA) fixed U2OS cells using PPDPF antibody (19912-1-AP) at dilution of 1:400 and CoraLite®488-Conjugated AffiniPure Goat Anti-Rabbit IgG(H+L), CL594-Phalloidin (red).