

For Research Use Only

# PPDPF Polyclonal antibody, PBS Only

Catalog Number:19912-1-PBS



## Basic Information

<b>Catalog Number:</b> 19912-1-PBS	<b>GenBank Accession Number:</b> BC002531	<b>Purification Method:</b> Antigen affinity purification
<b>Size:</b> 100ug , Concentration: 1 mg/ml by Nanodrop;	<b>GeneID (NCBI):</b> 79144	
<b>Source:</b> Rabbit	<b>UNIPROT ID:</b> Q9H3Y8	
<b>Isotype:</b> IgG	<b>Full Name:</b> chromosome 20 open reading frame 149	
<b>Immunogen Catalog Number:</b> AG13740	<b>Calculated MW:</b> 114 aa, 12 kDa	
	<b>Observed MW:</b> 10-12 kDa	

## Applications

**Tested Applications:**  
WB, IHC, IF/ICC, Indirect ELISA

**Species Specificity:**  
human, mouse

## Background Information

Pancreatic progenitor cell differentiation and proliferation factor (PPDPF), also known as C20orf149 and EXPDF, belongs to the PPDPF family. PPDPF is a key regulator for the development of exocrine pancreas. PPDPF is highly expressed in various cancers, including HCC, colorectal cancer, prostate cancer, etc (PMID: 34031390, 34975328, 37027301). PPDPF consists of 114 amino acids and the molecular weight is 12 kDa.

## Storage

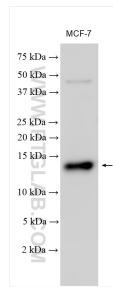
**Storage:**  
Store at -80°C.

**Storage Buffer:**  
PBS only, pH7.3

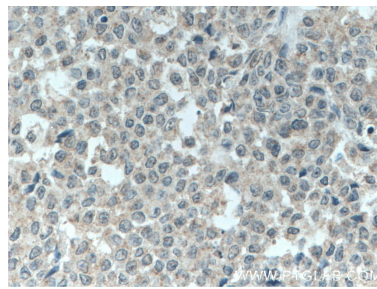
For technical support and original validation data for this product please contact:  
T: 1 (888) 4PTGLAB (1-888-478-4522) (toll free in USA), or 1(312) 455-8498 (outside USA)      E: proteintech@ptglab.com  
W: ptglab.com

**This product is exclusively available under Proteintech Group brand and is not available to purchase from any other manufacturer.**

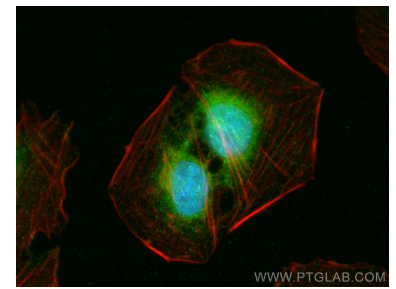
## Selected Validation Data



Various lysates were subjected to SDS PAGE followed by western blot with 19912-1-AP (PPDPF antibody) at dilution of 1:500 incubated at room temperature for 1.5 hours. This data was developed using the same antibody clone with 19912-1-PBS in a different storage buffer formulation.



Immunohistochemical analysis of paraffin-embedded human colon cancer tissue slide using 19912-1-AP (C20orf149 antibody) at dilution of 1:200 (under 40x lens. Heat mediated antigen retrieval with Tris-EDTA buffer (pH 9.0). This data was developed using the same antibody clone with 19912-1-PBS in a different storage buffer formulation.



Immunofluorescent analysis of (4% PFA) fixed U2OS cells using PPDPF antibody (19912-1-AP) at dilution of 1:400 and CoraLite@488-Conjugated AffiniPure Goat Anti-Rabbit IgG(H+L), CL594-Phalloidin (red). This data was developed using the same antibody clone with 19912-1-PBS in a different storage buffer formulation.