

For Research Use Only

# BZW1 Polyclonal antibody, PBS Only

Catalog Number: 19917-1-PBS

Featured Product



## Basic Information

### Catalog Number:

19917-1-PBS

### Size:

100ug, Concentration: 1 mg/ml by Nanodrop;

### Source:

Rabbit

### Isotype:

IgG

### Immunogen Catalog Number:

AG13830

### GenBank Accession Number:

BC001804

### GeneID (NCBI):

9689

### UNIPROT ID:

Q7L1Q6

### Full Name:

basic leucine zipper and W2 domains 1

### Calculated MW:

353 aa, 41 kDa

### Observed MW:

48 kDa

### Purification Method:

Antigen affinity purification

## Applications

### Tested Applications:

WB, IHC, IF/ICC, Indirect ELISA

### Species Specificity:

human

## Storage

### Storage:

Store at -80°C.

### Storage Buffer:

PBS only

For technical support and original validation data for this product please contact:

T: 1 (888) 4PTGLAB (1-888-478-4522) (toll free in USA), or 1(312) 455-8498 (outside USA)

E: [proteintech@ptglab.com](mailto:proteintech@ptglab.com)

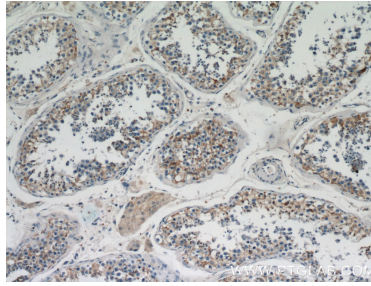
W: [ptglab.com](http://ptglab.com)

This product is exclusively available under Proteintech Group brand and is not available to purchase from any other manufacturer.

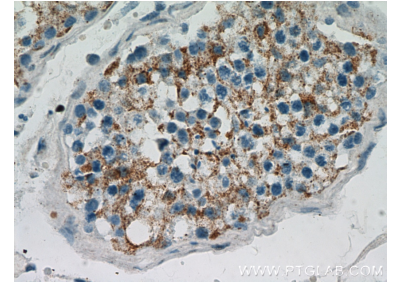
## Selected Validation Data



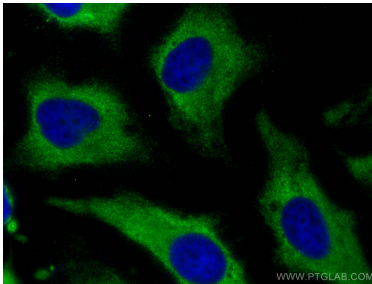
MCF7 cells were subjected to SDS PAGE followed by western blot with 19917-1-AP (BZW1 antibody) at dilution of 1:500 incubated at room temperature for 1.5 hours. This data was developed using the same antibody clone with 19917-1-PBS in a different storage buffer formulation.



Immunohistochemical analysis of paraffin-embedded human testis using 19917-1-AP (BZW1 antibody) at dilution of 1:100 (under 10x lens). This data was developed using the same antibody clone with 19917-1-PBS in a different storage buffer formulation.



Immunohistochemical analysis of paraffin-embedded human testis using 19917-1-AP (BZW1 antibody) at dilution of 1:100 (under 40x lens). This data was developed using the same antibody clone with 19917-1-PBS in a different storage buffer formulation.



Immunofluorescent analysis of (-20°C Methanol) fixed HeLa cells using BZW1 antibody (19917-1-AP) at dilution of 1:400 and CoraLite®488-Conjugated AffiniPure Goat Anti-Rabbit IgG(H+L) (SA00013-2). This data was developed using the same antibody clone with 19917-1-PBS in a different storage buffer formulation.