

For Research Use Only

NSG1 Polyclonal antibody, PBS Only

Catalog Number:19923-1-PBS



Basic Information

Catalog Number: 19923-1-PBS	GenBank Accession Number: BC001745	Purification Method: Antigen affinity purification
Size: 100ug , Concentration: 1 mg/ml by Nanodrop;	GeneID (NCBI): 27065	
Source: Rabbit	UNIPROT ID: P42857	
Isotype: IgG	Full Name: DNA segment on chromosome 4 (unique) 234 expressed sequence	
Immunogen Catalog Number: AG13888	Calculated MW: 185 aa, 21 kDa	
	Observed MW: 16-21 kDa	

Applications

Tested Applications:
WB, Indirect ELISA

Species Specificity:
human, mouse, rat

Background Information

NSG1, also known as Neuron-Enriched Endosomal Protein of 21 kDa (NEEP21), is a protein encoded by the NSG1 gene located on human chromosome 4p16.3. The Neuron-Specific Gene (NSG) family includes NSG1, NSG2, and NSG3. As their name indicates they are expressed almost exclusively in neurons, and localize to multiple subcellular organelles including the Golgi apparatus, early and late endosomes, and the plasma membrane. As a highly enriched endosomal protein within neuronal cells, NSG1 has been discovered to facilitate the process of epithelial-mesenchymal transition (EMT) in esophageal squamous cell carcinoma (ESCC). (PMID: 37872157, PMID: 41415429)

Storage

Storage:
Store at -80°C.

Storage Buffer:
PBS only, pH7.3

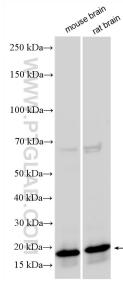
For technical support and original validation data for this product please contact:

T: 1 (888) 4PTGLAB (1-888-478-4522) (toll free in USA), or 1(312) 455-8498 (outside USA)

E: proteintech@ptglab.com
W: ptglab.com

This product is exclusively available under Proteintech Group brand and is not available to purchase from any other manufacturer.

Selected Validation Data



Various lysates were subjected to SDS PAGE followed by western blot with 19923-1-AP (NSG1 antibody) at dilution of 1:1000 incubated at room temperature for 1.5 hours. This data was developed using the same antibody clone with 19923-1-PBS in a different storage buffer formulation.