

For Research Use Only

# METTL16 Polyclonal antibody

Catalog Number: 19924-1-AP

Featured Product

20 Publications



## Basic Information

### Catalog Number:

19924-1-AP

### Size:

150ul, Concentration: 550 ug/ml by Nanodrop;

### Source:

Rabbit

### Isotype:

IgG

### Immunogen Catalog Number:

AG13889

### GenBank Accession Number:

BC001213

### GeneID (NCBI):

79066

### UNIPROT ID:

Q86W50

### Full Name:

methyltransferase 10 domain containing

### Calculated MW:

562 aa, 64 kDa

### Observed MW:

70-75 kDa

### Purification Method:

Antigen affinity purification

### Recommended Dilutions:

WB 1:2000-1:10000

IHC 1:500-1:2000

## Applications

### Tested Applications:

WB, IHC, ELISA

### Cited Applications:

WB, IHC, IF

### Species Specificity:

human, rat, mouse

### Cited Species:

human, mouse, rat

**Note-IHC: suggested antigen retrieval with TE buffer pH 9.0; (\*) Alternatively, antigen retrieval may be performed with citrate buffer pH 6.0**

### Positive Controls:

**WB** : HeLa cells, rat testis tissue, NCI-H1299 cells, NIH/3T3 cells, mouse testis tissue

**IHC** : human colon tissue, mouse testis tissue

## Background Information

Methyltransferase-like protein 16 (METTL16) is a human RNA methyltransferase that installs m6A marks on U6 small nuclear RNA (U6 snRNA) and S-adenosylmethionine (SAM) synthetase pre-mRNA. METTL16 is considered a protective gene, suppressing the development of OC, HCC, and endocrine system tumors (PMID: 33237039, PMID: 33133142, PMID: 34187307). However, the high expression of METTL16 has been linked with a poor survival rate in patients with breast cancer (PMID: 33362863). METTL16 has 2 isoforms with molecular weights of 64 and 26 kDa.

## Notable Publications

Author	Pubmed ID	Journal	Application
Fanhua Kong	36434140	Discov Oncol	WB
Deguan Lv	35659339	Dev Cell	WB
Feng Jiang	35035657	Oxid Med Cell Longev	WB

## Storage

### Storage:

Store at -20°C. Stable for one year after shipment.

### Storage Buffer:

PBS with 0.02% sodium azide and 50% glycerol

Aliquoting is unnecessary for -20°C storage

\*\*\* 20ul sizes contain 0.1% BSA

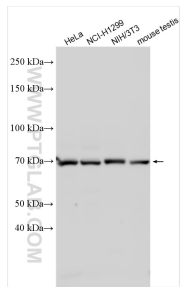
For technical support and original validation data for this product please contact:

T: 1 (888) 4PTGLAB (1-888-478-4522) (toll free in USA), or 1(312) 455-8498 (outside USA)

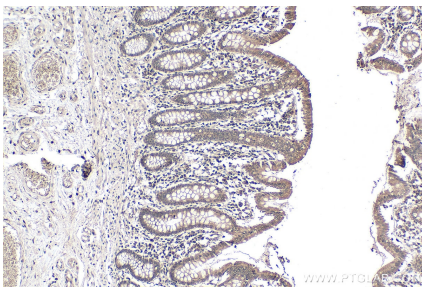
E: proteintech@ptglab.com  
W: ptglab.com

This product is exclusively available under Proteintech Group brand and is not available to purchase from any other manufacturer.

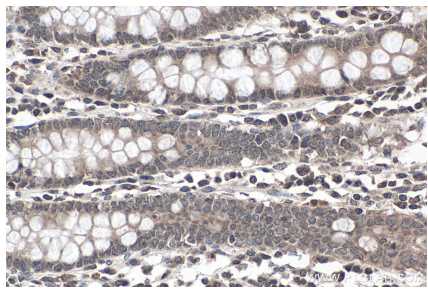
Selected Validation Data



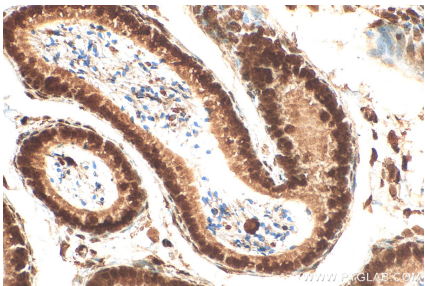
Various lysates were subjected to SDS PAGE followed by western blot with 19924-1-AP (METTL16 antibody) at dilution of 1:5000 incubated at room temperature for 1.5 hours.



Immunohistochemical analysis of paraffin-embedded human colon tissue slide using 19924-1-AP (METTL16 antibody) at dilution of 1:1000 (under 10x lens). Heat mediated antigen retrieval with Tris-EDTA buffer (pH 9.0).



Immunohistochemical analysis of paraffin-embedded human colon tissue slide using 19924-1-AP (METTL16 antibody) at dilution of 1:1000 (under 40x lens). Heat mediated antigen retrieval with Tris-EDTA buffer (pH 9.0).



Immunohistochemical analysis of paraffin-embedded mouse testis tissue slide using 19924-1-AP (METTL16 antibody) at dilution of 1:400 (under 40x lens). Heat mediated antigen retrieval with Tris-EDTA buffer (pH 9.0).