

For Research Use Only

CEP72 Polyclonal antibody

Catalog Number: 19928-1-AP

Featured Product

7 Publications



Basic Information

Catalog Number:

19928-1-AP

Size:

150ul, Concentration: 600 ug/ml by Nanodrop and 253 ug/ml by Bradford method using BSA as the standard;

Source:

Rabbit

Isotype:

IgG

Immunogen Catalog Number:

AG13905

GenBank Accession Number:

BC001750

GeneID (NCBI):

55722

UNIPROT ID:

Q9P209

Full Name:

centrosomal protein 72kDa

Calculated MW:

646 aa, 72 kDa

Observed MW:

72 kDa

Purification Method:

Antigen affinity purification

Recommended Dilutions:

WB 1:1000-1:6000

IP 0.5-4.0 ug for 1.0-3.0 mg of total protein lysate

IF/ICC 1:200-1:800

Applications

Tested Applications:

WB, IF/ICC, IP, ELISA

Cited Applications:

WB, IP, IF

Species Specificity:

human, mouse, rat

Cited Species:

human

Positive Controls:

WB : mouse testis tissue, HEK-293 cells, rat testis tissue

IP : HeLa cells,

IF/ICC : HeLa cells,

Notable Publications

Author	Pubmed ID	Journal	Application
Zhenguang Ying	36280838	BMC Biol	WB,IF
Deniz Conkar	31582766	Sci Rep	WB
Tianyu Wu	36395215	Science	IF

Storage

Storage:

Store at -20°C. Stable for one year after shipment.

Storage Buffer:

PBS with 0.02% sodium azide and 50% glycerol pH 7.3.

Aliquoting is unnecessary for -20°C storage

*** 20ul sizes contain 0.1% BSA

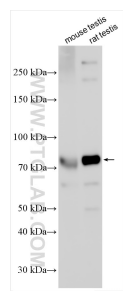
For technical support and original validation data for this product please contact:

T: 1 (888) 4PTGLAB (1-888-478-4522) (toll free in USA), or 1(312) 455-8498 (outside USA)

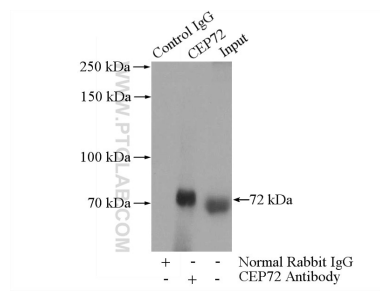
E: proteintech@ptglab.com
W: ptglab.com

This product is exclusively available under Proteintech Group brand and is not available to purchase from any other manufacturer.

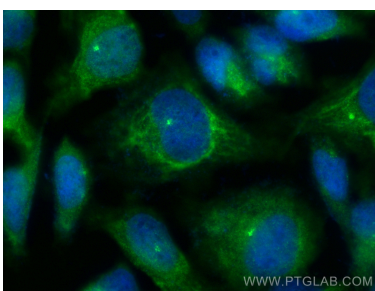
Selected Validation Data



Various lysates were subjected to SDS PAGE followed by western blot with 19928-1-AP (CEP72 antibody) at dilution of 1:3000 incubated at room temperature for 1.5 hours.



IP result of anti-CEP72 (IP:19928-1-AP, 4ug; Detection:19928-1-AP 1:1000) with HeLa cells lysate 520ug.



Immunofluorescent analysis of (-20°C Ethanol) fixed HeLa cells using CEP72 antibody (19928-1-AP) at dilution of 1:400 and Multi-rAb CoraLite® Plus 488-Goat Anti-Rabbit Recombinant Secondary Antibody (H+L) (RGAR002).