

For Research Use Only

CALHM2 Polyclonal antibody

Catalog Number: 19931-1-AP

2 Publications



Basic Information

Catalog Number: 19931-1-AP	GenBank Accession Number: BC000039	Purification Method: Antigen affinity purification
Size: 150ul, Concentration: 500 ug/ml by Nanodrop and 253 ug/ml by Bradford method using BSA as the standard;	GeneID (NCBI): 51063	Recommended Dilutions: WB 1:200-1:1000
Source: Rabbit	UNIPROT ID: Q9HA72	IHC 1:50-1:500
Isotype: IgG	Full Name: calcium homeostasis modulator 2	IF/ICC 1:200-1:800
Immunogen Catalog Number: AG13909	Calculated MW: 323 aa, 36 kDa	
	Observed MW: 32-36 kDa	

Applications

Tested Applications: WB, IHC, IF/ICC, ELISA	Positive Controls:
Cited Applications: WB, IF	WB : mouse brain tissue,
Species Specificity: human, mouse, rat	IHC : human placenta tissue,
Cited Species: rat, mouse	IF/ICC : U2OS cells,
Note-IHC: suggested antigen retrieval with TE buffer pH 9.0; (*) Alternatively, antigen retrieval may be performed with citrate buffer pH 6.0	

Background Information

CALHM2, also named as FAM26B, is a pore-forming subunit of a voltage-gated ion channel. It's a critical ATP-releasing channel that modulates neural activity and as a potential risk factor of depression. There're three isoforms of CALHM2 with calculated MW 36 kDa, 24 kDa and 22 kDa. It's about 32-36 kDa in western blot with membrane protein extraceted lysate.

Notable Publications

Author	Pubmed ID	Journal	Application
Xiaohui Li	37926398	Brain Res Bull	IF
Wen-Jing Ren	37183178	Cereb Cortex	WB

Storage

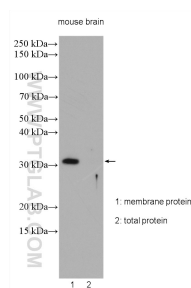
Storage:
Store at -20°C. Stable for one year after shipment.
Storage Buffer:
PBS with 0.02% sodium azide and 50% glycerol pH 7.3.
Aliquoting is unnecessary for -20°C storage

*** 20ul sizes contain 0.1% BSA

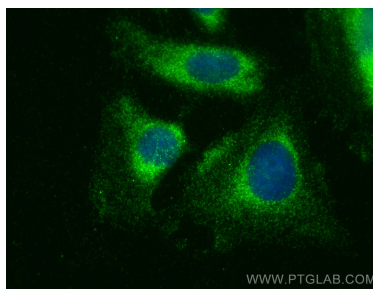
For technical support and original validation data for this product please contact:
T: 1 (888) 4PTGLAB (1-888-478-4522) (toll free in USA), or 1(312) 455-8498 (outside USA)
E: proteintech@ptglab.com
W: ptglab.com

This product is exclusively available under Proteintech Group brand and is not available to purchase from any other manufacturer.

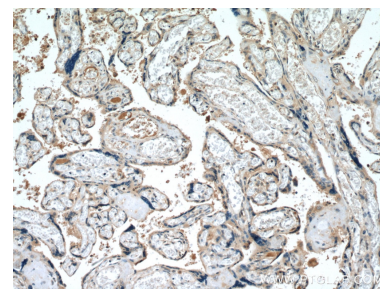
Selected Validation Data



Mouse brain extracted membrane protein and total protein lysates were subjected to SDS PAGE followed by western blot with 19931-1-AP (CALHM2 antibody) at dilution of 1:300 incubated at room temperature for 1.5 hours.



Immunofluorescent analysis of (-20°C Methanol) fixed U2OS cells using CALHM2 antibody (19931-1-AP) at dilution of 1:400 and CoraLite® 488-Conjugated Goat Anti-Rabbit IgG(H+L).



Immunohistochemical analysis of paraffin-embedded human placenta tissue slide using 19931-1-AP (CALHM2 antibody) at dilution of 1:200 (under 10x lens. Heat mediated antigen retrieval with Tris-EDTA buffer (pH 9.0).