

For Research Use Only

CYP2E1-Specific Polyclonal antibody, PBS Only

Catalog Number: 19937-1-PBS

Featured Product



Basic Information

Catalog Number:

19937-1-PBS

Size:

100ug, Concentration: 1 mg/ml by
Nanodrop;

Source:

Rabbit

Isotype:

IgG

GenBank Accession Number:

NM_000773

GeneID (NCBI):

1571

UNIPROT ID:

P05181

Full Name:

cytochrome P450, family 2, subfamily
E, polypeptide 1

Calculated MW:

57 kDa

Observed MW:

50-57 kDa

Purification Method:

Antigen affinity purification

Applications

Tested Applications:

WB, IHC, IF/ICC, Indirect ELISA

Species Specificity:

human, mouse, rat

Background Information

CYP2E1, also named as CYP11E1, 4-nitrophenol 2-hydroxylase, P450-J and CYP2E, belongs to the cytochrome P450 family. CYP2E1 metabolizes several precarcinogens, drugs, and solvents to reactive metabolites. It inactivates a number of drugs and xenobiotics and also bioactivates many xenobiotic substrates to their hepatotoxic or carcinogenic forms. CYP2E1 catalyze the reaction: 4-nitrophenol + NADPH + O₂ = 4-nitrocatechol + NADP⁺ + H₂O. CYP2E1 can be detected as 50-57 kDa (full-length) and ~40 kDa (N-terminal signal peptide cleaved) (PMID: 21130154). The antibody is specific to CYP2E1.

Storage

Storage:

Store at -80°C.

Storage Buffer:

PBS Only

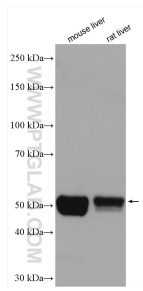
For technical support and original validation data for this product please contact:

T: 1 (888) 4PTGLAB (1-888-478-4522) (toll free
in USA), or 1(312) 455-8498 (outside USA)

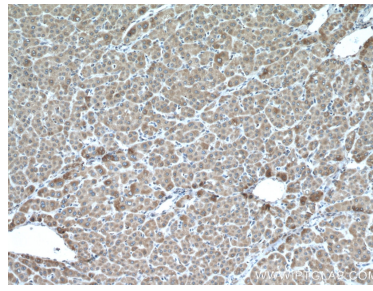
E: proteintech@ptglab.com
W: ptglab.com

This product is exclusively available under Proteintech Group brand and is not available to purchase from any other manufacturer.

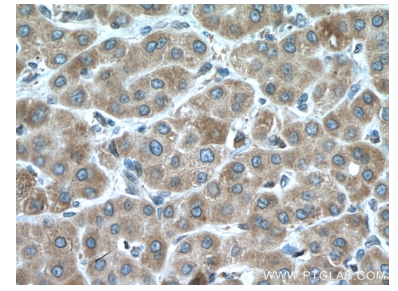
Selected Validation Data



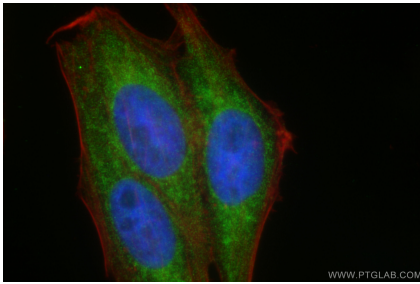
Various lysates were subjected to SDS PAGE followed by western blot with 19937-1-AP (CYP2E1-Specific antibody) at dilution of 1:6000 incubated at room temperature for 1.5 hours. This data was developed using the same antibody clone with 19937-1-PBS in a different storage buffer formulation.



Immunohistochemical analysis of paraffin-embedded human liver cancer tissue slide using 19937-1-AP (CYP2E1-Specific antibody) at dilution of 1:200 (under 10x lens. Heat mediated antigen retrieval with Tris-EDTA buffer (pH 9.0). This data was developed using the same antibody clone with 19937-1-PBS in a different storage buffer formulation.



Immunohistochemical analysis of paraffin-embedded human liver cancer tissue slide using 19937-1-AP (CYP2E1-Specific antibody) at dilution of 1:200 (under 40x lens. Heat mediated antigen retrieval with Tris-EDTA buffer (pH 9.0). This data was developed using the same antibody clone with 19937-1-PBS in a different storage buffer formulation.



Immunofluorescent analysis of (4% PFA) fixed HepG2 cells using CYP2E1-Specific antibody (19937-1-AP) at dilution of 1:400 and CoraLite@488-Conjugated AffiniPure Goat Anti-Rabbit IgG(H+L) (SA00013-2), CL594-phalloidin (red). This data was developed using the same antibody clone with 19937-1-PBS in a different storage buffer formulation.