

For Research Use Only

# CELSR2 Polyclonal antibody, PBS Only

Catalog Number:19940-1-PBS



## Basic Information

**Catalog Number:**

19940-1-PBS

**Size:**

100ug , Concentration: 1 mg/ml by Nanodrop;

**Source:**

Rabbit

**Isotype:**

IgG

**GenBank Accession Number:**

NM\_001408

**GeneID (NCBI):**

1952

**UNIPROT ID:**

Q9HCU4

**Full Name:**

cadherin, EGF LAG seven-pass G-type receptor 2 (flamingo homolog, Drosophila)

**Calculated MW:**

318 kDa

**Purification Method:**

Antigen affinity purification

## Applications

**Tested Applications:**

IHC, IF/ICC, Indirect ELISA

**Species Specificity:**

human, mouse

## Background Information

CELSR2, also named CDHF10, EGFL2, KIAA0279, and MEGF3, belongs to the G-protein coupled receptor 2 family and LN-TM7 subfamily. It is a receptor that may have an important role in cell/cell signaling during nervous system formation.

## Storage

**Storage:**

Store at -80°C.

**Storage Buffer:**

PBS Only

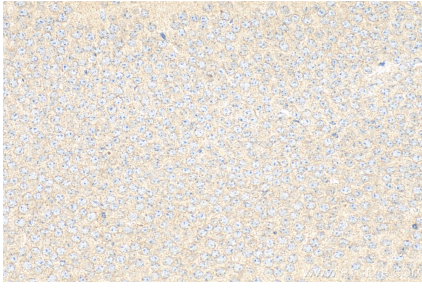
For technical support and original validation data for this product please contact:

T: 1 (888) 4PTGLAB (1-888-478-4522) (toll free in USA), or 1(312) 455-8498 (outside USA)

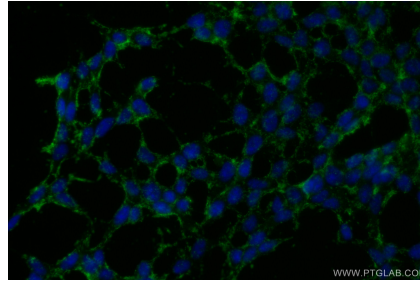
E: [proteintech@ptglab.com](mailto:proteintech@ptglab.com)  
W: [ptglab.com](http://ptglab.com)

**This product is exclusively available under Proteintech Group brand and is not available to purchase from any other manufacturer.**

## Selected Validation Data



Immunohistochemical analysis of paraffin-embedded mouse brain tissue slide using 19940-1-AP (CELSR2 antibody) at dilution of 1:200 (under 40x lens). Heat mediated antigen retrieval with Tris-EDTA buffer (pH 9.0). This data was developed using the same antibody clone with 19940-1-PBS in a different storage buffer formulation.



Immunofluorescent analysis of (-20°C Ethanol) fixed SH-SY5Y cells using CELSR2 antibody (19940-1-AP) at dilution of 1:400 and CoraLite® 488-Conjugated AffiniPure Goat Anti-Rabbit IgG(H+L) (SA00013-2). This data was developed using the same antibody clone with 19940-1-PBS in a different storage buffer formulation.