

For Research Use Only

ERBB4 Polyclonal antibody, PBS Only

Catalog Number:19943-1-PBS



Basic Information

Catalog Number:

19943-1-PBS

Size:

100ug , Concentration: 1 mg/ml by Nanodrop;

Source:

Rabbit

Isotype:

IgG

GenBank Accession Number:

NM_001042599

GeneID (NCBI):

2066

UNIPROT ID:

Q15303

Full Name:

v-erb-a erythroblastic leukemia viral oncogene homolog 4 (avian)

Calculated MW:

147 kDa

Observed MW:

180 kDa, 147 kDa

Purification Method:

Antigen affinity purification

Applications

Tested Applications:

WB, IHC, Indirect ELISA

Species Specificity:

human, mouse, rat

Background Information

ERBB4, also named p180erbB4 and HER4, belongs to the protein kinase superfamily, Tyr protein kinase family, and EGF receptor subfamily. ERBB4 specifically binds and it is activated by neuregulins, NRG-2, NRG-3, heparin-binding EGF-like growth factor, betacellulin, and NTAK. Interaction with these factors induces cell differentiation. ERBB4 is not activated by EGF, TGF- α , and amphiregulin. ERBB4 catalyzes the reaction: ATP + a [protein]-L-tyrosine = ADP + a [protein]-L-tyrosine phosphate. The antibody recognizes the C-term of ERBB4. Alternatively spliced variants that encode different protein isoforms with a calculated molecular weight of 144-147 kDa have been described. The apparent molecular weight of full-length ERBB4 is 150-200 kDa due to glycosylation and phosphorylation. Full-length ERBB4 can be cleaved into an 80-kDa ERBB4 intracellular fragment and a 120-kDa extracellular fragment (PMID: 11343971; 16251361).

Storage

Storage:

Store at -80°C.

Storage Buffer:

PBS only, pH7.3

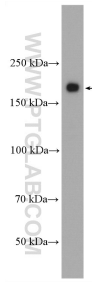
For technical support and original validation data for this product please contact:

T: 1 (888) 4PTGLAB (1-888-478-4522) (toll free in USA), or 1(312) 455-8498 (outside USA)

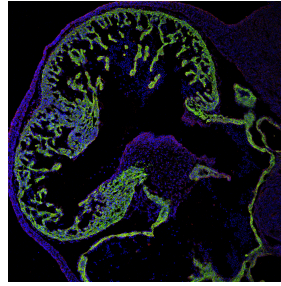
E: proteintech@ptglab.com
W: ptglab.com

This product is exclusively available under Proteintech Group brand and is not available to purchase from any other manufacturer.

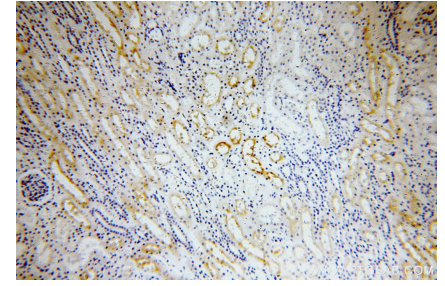
Selected Validation Data



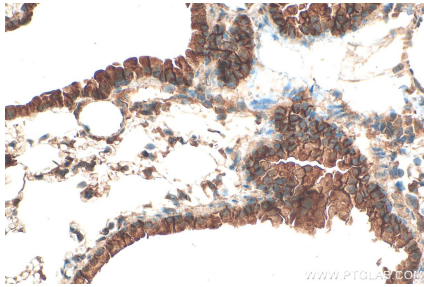
mouse brain tissue were subjected to SDS PAGE followed by western blot with 19943-1-AP (ERBB4 antibody) at dilution of 1:300 incubated at room temperature for 1.5 hours. This data was developed using the same antibody clone with 19943-1-PBS in a different storage buffer formulation.



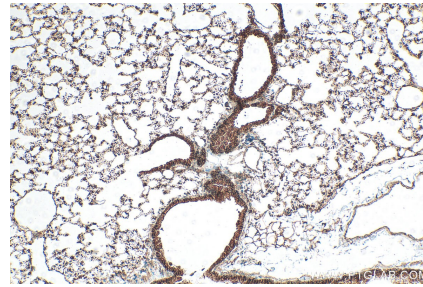
Frozen tissue section of embryonic mouse heart (E12.5) was stained for cardiac troponin-T/cTnT (green) and ErbB4 (red, Cat. No 19943-1-AP) with DAPI as a counterstain for visualizing the nucleus (blue). cTnT stains cardiomyocytes and was visualized with an Alexa Fluor 488 secondary antibody. ErbB4 is a key member of ErbB signaling and involved in development and was visualized with an Alexa Fluor 555 secondary antibody. The Image and figure legends are



Immunohistochemical analysis of paraffin-embedded human kidney using 19943-1-AP (ERBB4 antibody) at dilution of 1:100 (under 10x lens). This data was developed using the same antibody clone with 19943-1-PBS in a different storage buffer formulation.



Immunohistochemical analysis of paraffin-embedded mouse lung tissue slide using 19943-1-AP (ERBB4 antibody) at dilution of 1:200 (under 40x lens). Heat mediated antigen retrieval with Tris-EDTA buffer (pH 9.0). This data was developed using the same antibody clone with 19943-1-PBS in a different storage buffer formulation.



Immunohistochemical analysis of paraffin-embedded mouse lung tissue slide using 19943-1-AP (ERBB4 antibody) at dilution of 1:200 (under 10x lens). Heat mediated antigen retrieval with Tris-EDTA buffer (pH 9.0). This data was developed using the same antibody clone with 19943-1-PBS in a different storage buffer formulation.