

For Research Use Only

GPR22 Polyclonal antibody

Catalog Number: 19951-1-AP



Basic Information

Catalog Number: 19951-1-AP	GenBank Accession Number: NM_005295	Purification Method: Antigen affinity purification
Size: 150ul , Concentration: 260 µg/ml by Nanodrop and 160 µg/ml by Bradford method using BSA as the standard;	GeneID (NCBI): 2845	Recommended Dilutions: WB 1:500-1:1000 IHC 1:50-1:500
Source: Rabbit	Full Name: G protein-coupled receptor 22	
Isotype: IgG	Calculated MW: 49 kDa	
	Observed MW: 49 kDa	

Applications

Tested Applications:
FC, IHC, WB, ELISA

Species Specificity:
human, mouse, rat

Note-IHC: suggested antigen retrieval with TE buffer pH 9.0; (*) Alternatively, antigen retrieval may be performed with citrate buffer pH 6.0

Positive Controls:

WB: mouse heart tissue, mouse brain tissue, rat brain tissue

IHC: human testis tissue,

Background Information

GPR22 belongs to the G-protein coupled receptor 1 family. GPR22 is an Orphan receptor. The antibody recognizes the C-term of GPR22.

Storage

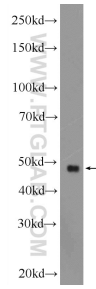
Storage:
Store at -20°C. Stable for one year after shipment.
Storage Buffer:
PBS with 0.02% sodium azide and 50% glycerol pH 7.3.
Aliquoting is unnecessary for -20°C storage

*** 20ul sizes contain 0.1% BSA

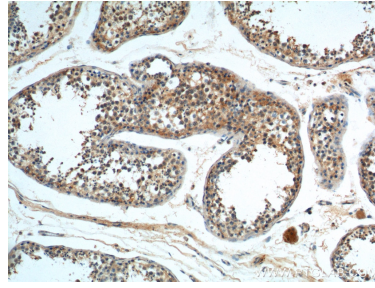
For technical support and original validation data for this product please contact:
T: 1 (888) 4PTGLAB (1-888-478-4522) (toll free in USA), or 1(312) 455-8498 (outside USA)
E: proteintech@ptglab.com
W: ptglab.com

This product is exclusively available under Proteintech Group brand and is not available to purchase from any other manufacturer.

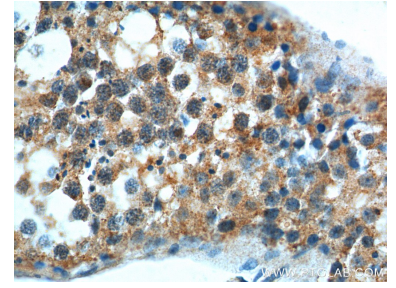
Selected Validation Data



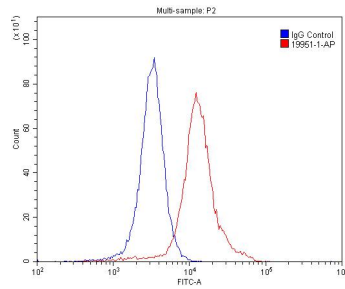
mouse heart tissue were subjected to SDS PAGE followed by western blot with 19951-1-AP (GPR22 Antibody) at dilution of 1:600 incubated at room temperature for 1.5 hours.



Immunohistochemical analysis of paraffin-embedded human testis tissue slide using 19951-1-AP (GPR22 Antibody) at dilution of 1:100 (under 10x lens).



Immunohistochemical analysis of paraffin-embedded human testis tissue slide using 19951-1-AP (GPR22 Antibody) at dilution of 1:100 (under 40x lens).



1x10⁶ SH-SY5Y cells were stained with 0.2ug GPR22 antibody (19951-1-AP, red) and control antibody (blue). Fixed with 4% PFA blocked with 3% BSA (30 min). Alexa Fluor 488-conjugated AffiniPure Goat Anti-Rabbit IgG(H+L) with dilution 1:1500.