

For Research Use Only

mGluR1 Polyclonal antibody

Catalog Number: 19955-1-AP **3 Publications**



Basic Information

Catalog Number: 19955-1-AP	GenBank Accession Number: NM_000838	Purification Method: Antigen affinity purification
Size: 150ul , Concentration: 260 µg/ml by Nanodrop and 167 µg/ml by Bradford method using BSA as the standard;	GeneID (NCBI): 2911	Recommended Dilutions: IHC 1:50-1:500 IF 1:50-1:500
Source: Rabbit	Full Name: glutamate receptor, metabotropic 1	
Isotype: IgG	Calculated MW: 132 kDa	

Applications

Tested Applications: FC, IF, IHC, ELISA	Positive Controls: IHC : mouse brain tissue, IF : mouse brain tissue,
Species Specificity: human, mouse	
Cited Species: human	

Note-IHC: suggested antigen retrieval with TE buffer pH 9.0; (*) Alternatively, antigen retrieval may be performed with citrate buffer pH 6.0

Background Information

GRM1, also named as GPCR1A and MGLUR1, belongs to the G-protein coupled receptor 3 family. GRM1 is a receptor for glutamate. The activity of GRM1 is mediated by a G-protein that activates a phosphatidylinositol-calcium second messenger system. It may participate in the central action of glutamate in the CNS, such as long-term potentiation in the hippocampus and long-term depression in the cerebellum. The antibody can recognize isoform1 and isoform2 of GRM1.

Notable Publications

Author	Pubmed ID	Journal	Application
Jee Hyun Yi	32766549	Brain Commun	
Stacey S Willard	23983606	Int J Biol Sci	
Koochekpour Shahriar S	23072969	Clin Cancer Res	

Storage

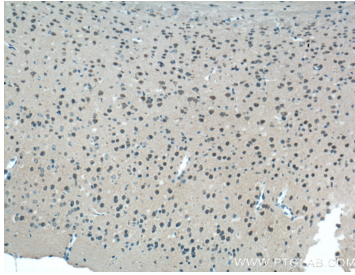
Storage:
Store at -20°C. Stable for one year after shipment.
Storage Buffer:
PBS with 0.02% sodium azide and 50% glycerol pH 7.3.
Aliquoting is unnecessary for -20°C storage

*** 20ul sizes contain 0.1% BSA

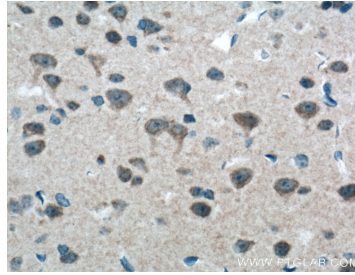
For technical support and original validation data for this product please contact:
T: 1 (888) 4PTGLAB (1-888-478-4522) (toll free in USA), or 1(312) 455-8498 (outside USA)
E: proteintech@ptglab.com
W: ptglab.com

This product is exclusively available under Proteintech Group brand and is not available to purchase from any other manufacturer.

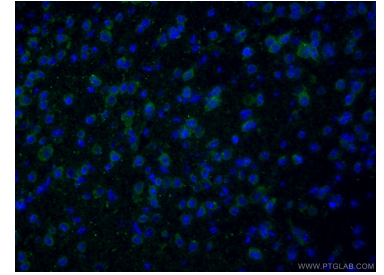
Selected Validation Data



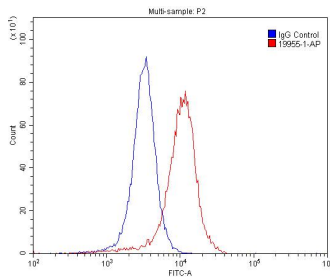
Immunohistochemical analysis of paraffin-embedded mouse brain tissue slide using 19955-1-AP (mGluR1 antibody at dilution of 1:200 (under 10x lens). Heat mediated antigen retrieval with Tris-EDTA buffer (pH 9.0).



Immunohistochemical analysis of paraffin-embedded mouse brain tissue slide using 19955-1-AP (mGluR1 antibody at dilution of 1:200 (under 40x lens). Heat mediated antigen retrieval with Tris-EDTA buffer (pH 9.0).



Immunofluorescent analysis of (4% PFA) fixed mouse brain tissue using 19955-1-AP (mGluR1 antibody) at dilution of 1:50 and Alexa Fluor 488-conjugated AffiniPure Goat Anti-Rabbit IgG(H+L).



1X10⁶ SH-SY5Y cells were stained with 0.2ug mGluR1 antibody (19955-1-AP, red) and control antibody (blue). Fixed with 4% PFA blocked with 3% BSA (30 min). Alexa Fluor 488-conjugated AffiniPure Goat Anti-Rabbit IgG(H+L) with dilution 1:1500.