

For Research Use Only

mGluR2 Polyclonal antibody

Catalog Number: 19956-1-AP **2 Publications**



Basic Information

Catalog Number: 19956-1-AP	GenBank Accession Number: NM_000839	Purification Method: Antigen affinity purification
Size: 150ul , Concentration: 800 µg/ml by Nanodrop;	GeneID (NCBI): 2912	Recommended Dilutions: WB 1:500-1:2000 IHC 1:50-1:500
Source: Rabbit	Full Name: glutamate receptor, metabotropic 2	
Isotype: IgG	Calculated MW: 96 kDa	
	Observed MW: 96 kDa, 120 kDa	

Applications

Tested Applications: FC, IHC, WB, ELISA	Positive Controls:
Cited Applications: IHC, WB	WB : human brain tissue, HeLa cells, rat brain tissue
Species Specificity: human, mouse, rat	IHC : mouse brain tissue,
Cited Species: human, rat	
Note-IHC: suggested antigen retrieval with TE buffer pH 9.0; (*) Alternatively, antigen retrieval may be performed with citrate buffer pH 6.0	

Background Information

GRM2, also named as GPRC1B and MGLUR2, belongs to the G-protein coupled receptor 3 family. GRM2 is a receptor for glutamate. The activity of GRM2 is mediated by a G-protein that inhibits adenylate cyclase activity. It may mediate suppression of neurotransmission or may be involved in synaptogenesis or synaptic stabilization.

Notable Publications

Author	Pubmed ID	Journal	Application
Xixi Wei	36463578	Auton Neurosci	WB,IHC
Javierre Biola M BM	21737484	Mol Cancer Res	WB

Storage

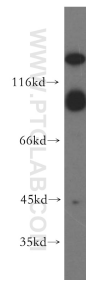
Storage:
Store at -20°C. Stable for one year after shipment.
Storage Buffer:
PBS with 0.02% sodium azide and 50% glycerol pH 7.3.
Aliquoting is unnecessary for -20°C storage

*** 20ul sizes contain 0.1% BSA

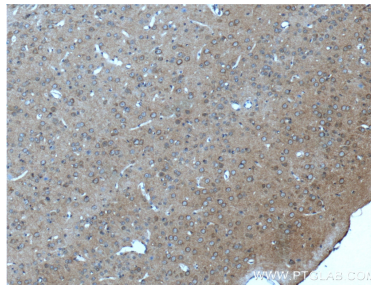
For technical support and original validation data for this product please contact:
T: 1 (888) 4PTGLAB (1-888-478-4522) (toll free in USA), or 1(312) 455-8498 (outside USA)
E: proteintech@ptglab.com
W: ptglab.com

This product is exclusively available under Proteintech Group brand and is not available to purchase from any other manufacturer.

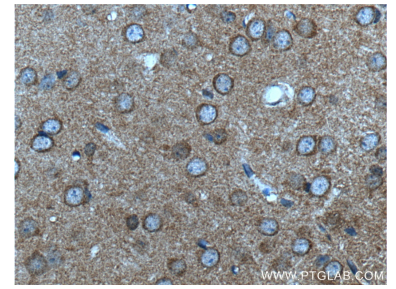
Selected Validation Data



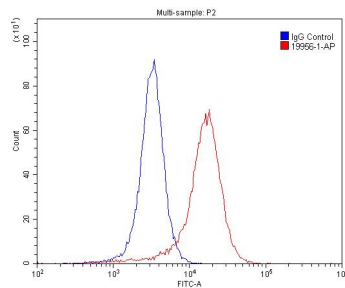
human brain tissue were subjected to SDS PAGE followed by western blot with 19956-1-AP (mGluR2 antibody) at dilution of 1:300 incubated at room temperature for 1.5 hours.



Immunohistochemical analysis of paraffin-embedded mouse brain tissue slide using 19956-1-AP (mGluR2 antibody at dilution of 1:200 (under 10x lens).



Immunohistochemical analysis of paraffin-embedded mouse brain tissue slide using 19956-1-AP (mGluR2 antibody at dilution of 1:200 (under 40x lens).



1×10^6 SH-SY5Y cells were stained with 0.2ug mGluR2 antibody (19956-1-AP, red) and control antibody (blue). Fixed with 4% PFA blocked with 3% BSA (30 min). Alexa Fluor 488-conjugated AffiniPure Goat Anti-Rabbit IgG(H+L) with dilution 1:1500.