

For Research Use Only

# MAP3K1 Polyclonal antibody

Catalog Number: 19970-1-AP

Featured Product

10 Publications



## Basic Information

### Catalog Number:

19970-1-AP

### Size:

150ul, Concentration: 300 µg/ml by Nanodrop;

### Source:

Rabbit

### Isotype:

IgG

### GenBank Accession Number:

NM\_005921

### GeneID (NCBI):

4214

### Full Name:

mitogen-activated protein kinase kinase kinase 1

### Calculated MW:

164 kDa

### Observed MW:

164 kDa

### Purification Method:

Antigen affinity purification

### Recommended Dilutions:

WB 1:1000-1:4000

IP 0.5-4.0 µg for IP and 1:500-1:2000 for WB

IHC 1:50-1:500

IF 1:20-1:200

## Applications

### Tested Applications:

IF, IHC, IP, WB, ELISA

### Cited Applications:

IF, WB

### Species Specificity:

human, mouse, rat

### Cited Species:

human, mouse

### Positive Controls:

WB: mouse embryo tissue, A431 cells, mouse spleen tissue, A549 cells, NIH/3T3 cells, rat spleen tissue

IP: NIH/3T3 cells,

IHC: human spleen tissue,

IF: HeLa cells,

**Note-IHC: suggested antigen retrieval with TE buffer pH 9.0; (\*) Alternatively, antigen retrieval may be performed with citrate buffer pH 6.0**

## Background Information

MAP3K1, also named as MAPKKK1, MEKK and MEKK1, belongs to the protein kinase superfamily, STE Ser/Thr protein kinase family and MAP kinase kinase kinase subfamily. MAP3K1 is a component of a protein kinase signal transduction cascade. MAP3K1 activates the ERK and JNK kinase pathways by phosphorylation of MAP2K1 and MAP2K4. It activates CHUK and IKK $\beta$ , the central protein kinases of the NF- $\kappa$ B pathway. It catalyzes the reaction: ATP + a protein = ADP + a phosphoprotein. The antibody recognizes the N-term of MAP3K1.

## Notable Publications

Author	Pubmed ID	Journal	Application
Jingsheng Yuan	36244648	Cell Mol Gastroenterol Hepatol	WB
Zepeng Xu	34655847	Int Immunopharmacol	WB
Rui Tang	31853225	Int J Biol Sci	WB

## Storage

### Storage:

Store at -20°C. Stable for one year after shipment.

### Storage Buffer:

PBS with 0.02% sodium azide and 50% glycerol pH 7.3.

Aliquoting is unnecessary for -20°C storage

\*\*\* 20ul sizes contain 0.1% BSA

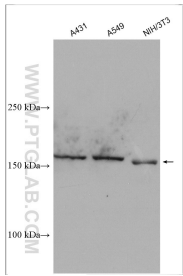
For technical support and original validation data for this product please contact:

T: 1 (888) 4PTGLAB (1-888-478-4522) (toll free in USA), or 1(312) 455-8498 (outside USA)

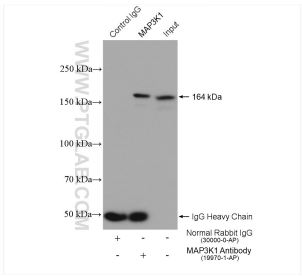
E: [proteintech@ptglab.com](mailto:proteintech@ptglab.com)  
W: [ptglab.com](http://ptglab.com)

This product is exclusively available under Proteintech Group brand and is not available to purchase from any other manufacturer.

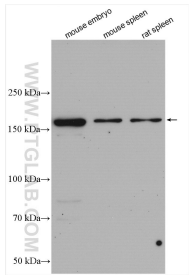
Selected Validation Data



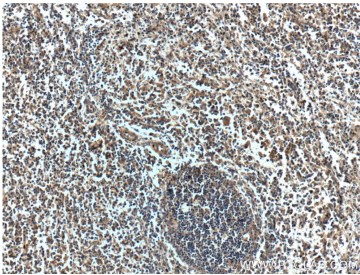
Various lysates were subjected to SDS PAGE followed by western blot with 19970-1-AP (MAP3K1 antibody) at dilution of 1:500 incubated at room temperature for 1.5 hours.



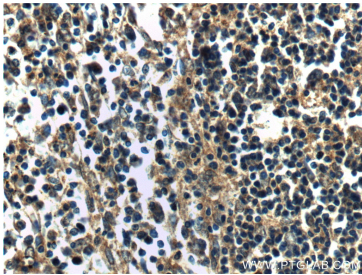
IP result of anti-MAP3K1(IP:19970-1-AP, 4ug; Detection:19970-1-AP 1:1000) with NIH/3T3 cells lysate 1120 ug.



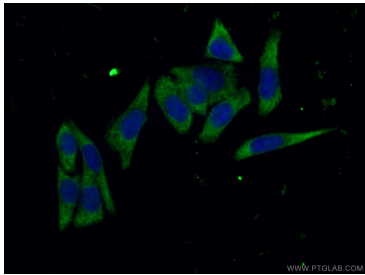
Various lysates were subjected to SDS PAGE followed by western blot with 19970-1-AP (MAP3K1 antibody) at dilution of 1:2000 incubated at room temperature for 1.5 hours.



Immunohistochemical analysis of paraffin-embedded human spleen tissue slide using 19970-1-AP (MAP3K1 Antibody) at dilution of 1:200 (under 10x lens).



Immunohistochemical analysis of paraffin-embedded human spleen tissue slide using 19970-1-AP (MAP3K1 Antibody) at dilution of 1:200 (under 40x lens).



Immunofluorescent analysis of (-20°C Ethanol) fixed HeLa cells using 19970-1-AP (MAP3K1 antibody) at dilution of 1:50 and Alexa Fluor 488-conjugated AffiniPure Goat Anti-Rabbit IgG(H+L).