

For Research Use Only

# ROBO2 Polyclonal antibody

Catalog Number: 19986-1-AP



## Basic Information

<b>Catalog Number:</b> 19986-1-AP	<b>GenBank Accession Number:</b> NM_002942	<b>Purification Method:</b> Antigen affinity purification
<b>Size:</b> 150ul	<b>GeneID (NCBI):</b> 6092	<b>Recommended Dilutions:</b> IP 0.5-4.0 ug for IP and 1:200-1:1000 for WB
<b>Source:</b> Rabbit	<b>Full Name:</b> roundabout, axon guidance receptor, homolog 2 (Drosophila)	<b>IHC 1:50-1:500</b>
<b>Isotype:</b> IgG	<b>Calculated MW:</b> 151 kDa	

## Applications

**Tested Applications:**  
IHC, IP, ELISA

**Species Specificity:**  
human

**Note-IHC: suggested antigen retrieval with TE buffer pH 9.0; (\*) Alternatively, antigen retrieval may be performed with citrate buffer pH 6.0**

**Positive Controls:**

IP: SH-SY5Y cells,

IHC: human cerebellum tissue, human prostate hyperplasia tissue

## Background Information

ROBO2, also named as KIAA1568, belongs to the immunoglobulin superfamily and ROBO family. ROBO2 is a receptor for SLIT2, and probably SLIT1, which are thought to act as molecular guidance cue in cellular migration, including axonal navigation at the ventral midline of the neural tube and projection of axons to different regions during neuronal development. Defects in ROBO2 are the cause of vesicoureteral reflux type 2 (VUR2). A chromosomal aberration involving ROBO2 is a cause of multiple congenital abnormalities, including severe bilateral VUR with ureterovesical junction defects. The antibody recognizes the C-term of ROBO.

## Storage

**Storage:**

Store at -20°C. Stable for one year after shipment.

**Storage Buffer:**

PBS with 0.02% sodium azide and 50% glycerol pH 7.3.

Aliquoting is unnecessary for -20°C storage

\*\*\* 20ul sizes contain 0.1% BSA

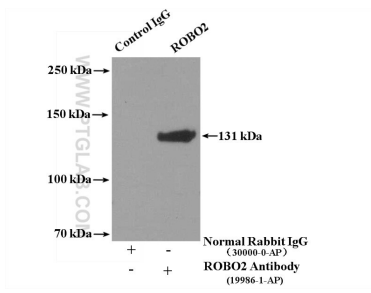
For technical support and original validation data for this product please contact:

T: 1 (888) 4PTGLAB (1-888-478-4522) (toll free in USA), or 1(312) 455-8498 (outside USA)

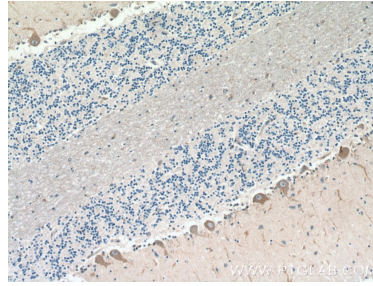
E: [proteintech@ptglab.com](mailto:proteintech@ptglab.com)  
W: [ptglab.com](http://ptglab.com)

This product is exclusively available under Proteintech Group brand and is not available to purchase from any other manufacturer.

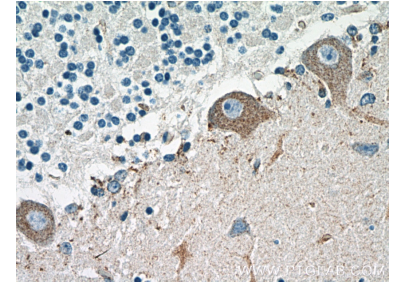
## Selected Validation Data



IP Result of anti-ROBO2 (IP:19986-1-AP, 4 $\mu$ g; Detection:19986-1-AP 1:300) with SH-SY5Y cells lysate 3600 $\mu$ g.



Immunohistochemical analysis of paraffin-embedded human cerebellum tissue slide using 19986-1-AP (ROBO2 Antibody) at dilution of 1:200 (under 10x lens).



Immunohistochemical analysis of paraffin-embedded human cerebellum tissue slide using 19986-1-AP (ROBO2 Antibody) at dilution of 1:200 (under 40x lens).