

For Research Use Only

LDHB-Specific Polyclonal antibody

Catalog Number: 19988-1-AP

Featured Product

6 Publications



Basic Information

Catalog Number:

19988-1-AP

Size:

150ul, Concentration: 500 ug/ml by Nanodrop;

Source:

Rabbit

Isotype:

IgG

GenBank Accession Number:

NM_002300

GeneID (NCBI):

3945

UNIPROT ID:

P07195

Full Name:

lactate dehydrogenase B

Calculated MW:

37 kDa

Observed MW:

35 kDa

Purification Method:

Antigen affinity purification

Recommended Dilutions:

WB 1:1000-1:6000

IHC 1:300-1:1200

IF/ICC 1:200-1:800

Applications

Tested Applications:

WB, IHC, IF/ICC, ELISA

Cited Applications:

WB, IHC, IF

Species Specificity:

human, mouse, rat

Cited Species:

human, mouse

Note-IHC: suggested antigen retrieval with TE buffer pH 9.0; (*) Alternatively, antigen retrieval may be performed with citrate buffer pH 6.0

Positive Controls:

WB: DU 145 cells, HeLa cells, HEK-293T cells, Jurkat cells, PC-3 cells, mouse heart tissue, rat heart tissue

IHC: human ovary cancer tissue,

IF/ICC: HeLa cells,

Background Information

LDHB, also named as NY-REN-46 and LDH-H, belongs to the LDH/MDH superfamily and LDH family. LDHB catalyzes the reaction: (S)-lactate + NAD⁺ = pyruvate + NADH. It is an enzyme which catalyzes the reversible conversion of lactate and pyruvate, and NAD and NADH, in the glycolytic pathway. It is glycolytic enzymes and it is positively regulated by mTOR. Defects in LDHB are a cause of hereditary LDHB deficiency. The antibody is specific to LDHB and has no cross reaction with LDHA and LDHC.

Notable Publications

Author	Pubmed ID	Journal	Application
Iqra Ishrat	34762224	Mol Biol Rep	WB
Gunars Osis	33719570	Am J Physiol Renal Physiol	IHC, IF
Renato X Santos	35453617	Biomedicines	WB

Storage

Storage:

Store at -20°C. Stable for one year after shipment.

Storage Buffer:

PBS with 0.02% sodium azide and 50% glycerol pH 7.3.

Aliquoting is unnecessary for -20°C storage

*** 20ul sizes contain 0.1% BSA

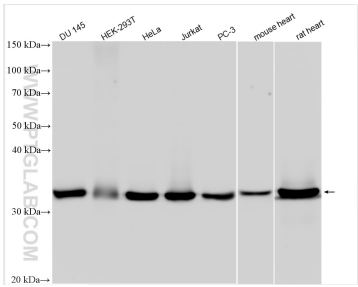
For technical support and original validation data for this product please contact:

T: 1 (888) 4PTGLAB (1-888-478-4522) (toll free in USA), or 1(312) 455-8498 (outside USA)

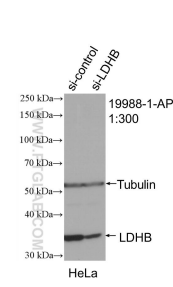
E: proteintech@ptglab.com
W: ptglab.com

This product is exclusively available under Proteintech Group brand and is not available to purchase from any other manufacturer.

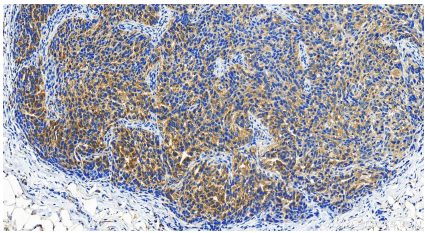
Selected Validation Data



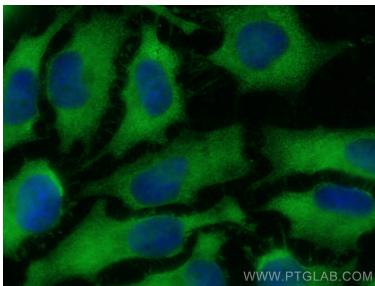
Various lysates were subjected to SDS PAGE followed by western blot with 19988-1-AP (LDHB-Specific antibody) at dilution of 1:3000 incubated at room temperature for 1.5 hours.



WB result of LDHB-Specific antibody (19988-1-AP; 1:300; incubated at room temperature for 1.5 hours) with sh-Control and sh-LDHB-Specific transfected HeLa cells.



Immunohistochemical analysis of paraffin-embedded human ovary cancer tissue slide using 19988-1-AP (LDHB-Specific antibody) at dilution of 1:600 (under 20x lens). Heat mediated antigen retrieval with Tris-EDTA buffer (pH 9.0).



Immunofluorescent analysis of (-20°C Ethanol) fixed HeLa cells using LDHB-Specific antibody (19988-1-AP) at dilution of 1:400 and CoraLite®488-Conjugated AffiniPure Goat Anti-Rabbit IgG(H+L).