

For Research Use Only

LDHC-Specific Polyclonal antibody

Catalog Number: 19989-1-AP **4 Publications**



Basic Information

Catalog Number: 19989-1-AP	GenBank Accession Number: NM_002301	Purification Method: Antigen affinity purification
Size: 150ul , Concentration: 400 ug/ml by Nanodrop;	GeneID (NCBI): 3948	Recommended Dilutions: WB 1:200-1:1000 IP 0.5-4.0 ug for 1.0-3.0 mg of total protein lysate
Source: Rabbit	UNIPROT ID: P07864	IHC 1:200-1:800 IF/ICC 1:10-1:100
Isotype: IgG	Full Name: lactate dehydrogenase C	
	Calculated MW: 36 kDa	
	Observed MW: 30-36 kDa	

Applications

Tested Applications:
WB, IHC, IF/ICC, IP, ELISA

Cited Applications:
WB, IHC, IF

Species Specificity:
human, mouse, rat

Cited Species:
mouse, pig

Note-IHC: suggested antigen retrieval with TE buffer pH 9.0; (*) Alternatively, antigen retrieval may be performed with citrate buffer pH 6.0

Positive Controls:

WB : human testis tissue, mouse brain tissue, mouse lung tissue, mouse testis tissue, A549 cells, rat testis tissue

IP : mouse testis tissue,

IHC : mouse testis tissue, human testis tissue, human heart tissue

IF/ICC : HeLa cells,

Background Information

LDHC, also named as CT32 and LDH-X, belongs to the LDH/MDH superfamily and LDH family. LDHC is a possible role in sperm motility. LDHC catalyzes the reaction: (S)-lactate + NAD⁺ = pyruvate + NADH. LDHC is a testis-specific isoform. Abnormal LDHC expression is associated with several forms of cancer. The antibody has no cross reaction with LDHA and LDHB.

Notable Publications

Author	Pubmed ID	Journal	Application
Yuping Chen	34262451	Front Pharmacol	WB
Li Yang	31332157	Med Sci Monit	IHC
Rie Iida-Norita	36464740	Andrology	WB,IHC

Storage

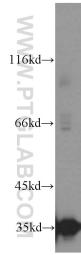
Storage:
Store at -20°C. Stable for one year after shipment.
Storage Buffer:
PBS with 0.02% sodium azide and 50% glycerol pH 7.3.
Aliquoting is unnecessary for -20°C storage

*** 20ul sizes contain 0.1% BSA

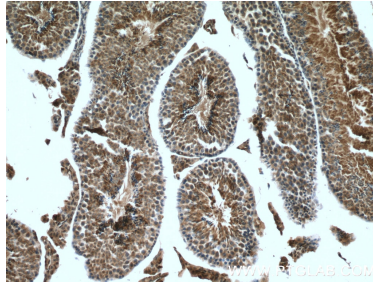
For technical support and original validation data for this product please contact:
T: 1 (888) 4PTGLAB (1-888-478-4522) (toll free in USA), or 1(312) 455-8498 (outside USA)
E: proteintech@ptglab.com
W: ptglab.com

This product is exclusively available under Proteintech Group brand and is not available to purchase from any other manufacturer.

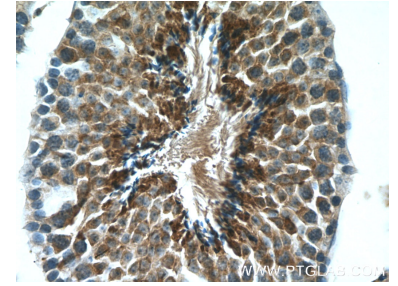
Selected Validation Data



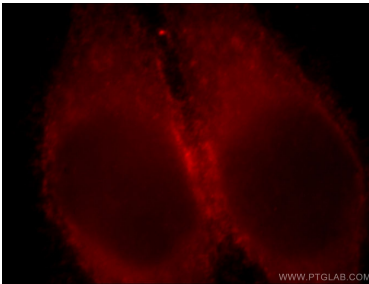
human testis tissue were subjected to SDS PAGE followed by western blot with 19989-1-AP (LDHC-Specific antibody) at dilution of 1:300 incubated at room temperature for 1.5 hours.



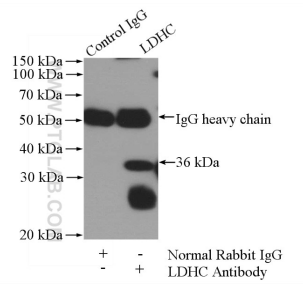
Immunohistochemical analysis of paraffin-embedded mouse testis tissue slide using 19989-1-AP (LDHC-Specific antibody) at dilution of 1:400 (under 10x lens. Heat mediated antigen retrieval with Tris-EDTA buffer (pH 9.0).



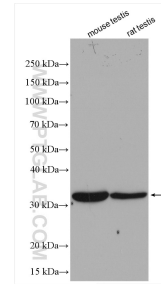
Immunohistochemical analysis of paraffin-embedded mouse testis tissue slide using 19989-1-AP (LDHC-Specific antibody) at dilution of 1:400 (under 40x lens. Heat mediated antigen retrieval with Tris-EDTA buffer (pH 9.0).



Immunofluorescent analysis of HeLa cells, using LDHC antibody 19989-1-AP at 1:25 dilution and Rhodamine-labeled goat anti-rabbit IgG (red).



IP result of anti-LDHC-Specific (IP:19989-1-AP, 4ug; Detection:19989-1-AP 1:500) with mouse testis tissue lysate 2400ug.



Various lysates were subjected to SDS PAGE followed by western blot with 19989-1-AP (LDHC-Specific antibody) at dilution of 1:3000 incubated at room temperature for 1.5 hours.