

For Research Use Only

# CYP4F2-Specific Polyclonal antibody



Catalog Number: 20010-1-AP

Featured Product

## Basic Information

<b>Catalog Number:</b> 20010-1-AP	<b>GenBank Accession Number:</b> NM_001082	<b>Purification Method:</b> Antigen affinity purification
<b>Size:</b> 150ul , Concentration: 400 µg/ml by Nanodrop;	<b>GeneID (NCBI):</b> 8529	<b>Recommended Dilutions:</b> WB 1:500-1:3000 IHC 1:50-1:500
<b>Source:</b> Rabbit	<b>Full Name:</b> cytochrome P450, family 4, subfamily F, polypeptide 2	
<b>Isotype:</b> IgG	<b>Calculated MW:</b> 60 kDa	
	<b>Observed MW:</b> 50-53 kDa	

## Applications

### Tested Applications:

IHC, WB, ELISA

### Species Specificity:

human

**Note-IHC: suggested antigen retrieval with TE buffer pH 9.0; (\*) Alternatively, antigen retrieval may be performed with citrate buffer pH 6.0**

### Positive Controls:

WB : A549 cells, HuH-7 cells, L02 cells, SMMC-7721 cells

IHC : human liver tissue,

## Background Information

CYP4F2, also named as CPF2, belongs to the cytochrome P450 family. Cytochromes P450 are a group of heme-thiolate monooxygenases. In liver microsomes, CYP4F2 is involved in an NADPH-dependent electron transport pathway. It oxidizes a variety of structurally unrelated compounds, including steroids, fatty acids, and xenobiotics. This antibody is specific to CYP4F2 with an observed molecular weight of 50-53 kDa (PMID: 17341693, PMID: 37121548). It has no cross reaction to other CYP4F member.

## Storage

### Storage:

Store at -20°C. Stable for one year after shipment.

### Storage Buffer:

PBS with 0.02% sodium azide and 50% glycerol pH 7.3.

Aliquoting is unnecessary for -20°C storage

\*\*\* 20ul sizes contain 0.1% BSA

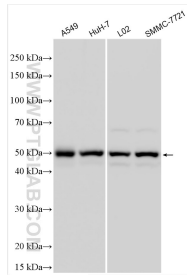
For technical support and original validation data for this product please contact:

T: 1 (888) 4PTGLAB (1-888-478-4522) (toll free in USA), or 1(312) 455-8498 (outside USA)

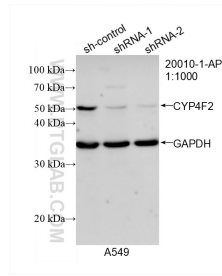
E: proteintech@ptglab.com  
W: ptglab.com

This product is exclusively available under Proteintech Group brand and is not available to purchase from any other manufacturer.

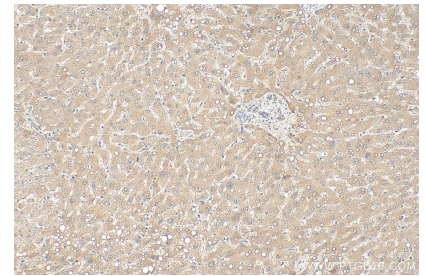
## Selected Validation Data



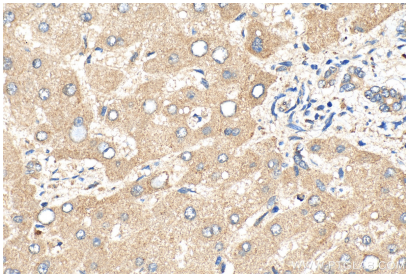
Various lysates were subjected to SDS PAGE followed by western blot with 20010-1-AP (CYP4F2-Specific antibody) at dilution of 1:1500 incubated at room temperature for 1.5 hours.



WB result of CYP4F2-Specific antibody (20010-1-AP; 1:1000; incubated at room temperature for 1.5 hours) with sh-Control and sh-CYP4F2-Specific transfected A549 cells.



Immunohistochemical analysis of paraffin-embedded human liver tissue slide using 20010-1-AP (CYP4F2-Specific antibody) at dilution of 1:200 (under 10x lens). Heat mediated antigen retrieval with Tris-EDTA buffer (pH 9.0).



Immunohistochemical analysis of paraffin-embedded human liver tissue slide using 20010-1-AP (CYP4F2-Specific antibody) at dilution of 1:200 (under 40x lens). Heat mediated antigen retrieval with Tris-EDTA buffer (pH 9.0).