

For Research Use Only

CYP4F11-Specific Polyclonal antibody



Catalog Number: 20012-1-AP

1 Publications

Basic Information

Catalog Number: 20012-1-AP	GenBank Accession Number: NM_001128932	Purification Method: Antigen affinity purification
Size: 150ul , Concentration: 260 µg/ml by Nanodrop and 247 µg/ml by Bradford method using BSA as the standard;	GeneID (NCBI): 57834	Recommended Dilutions: IHC 1:20-1:200 IF 1:10-1:100
Source: Rabbit	UNIPROT ID: Q9HBI6	
Isotype: IgG	Full Name: cytochrome P450, family 4, subfamily F, polypeptide 11	
	Calculated MW: 60 kDa	
	Observed MW: 60 kDa	

Applications

Tested Applications: IF, IHC, ELISA	Positive Controls: IHC : human hepatocirrhosis tissue, IF : HepG2 cells,
Species Specificity: human, mouse	
Cited Species: human, mouse	
Note-IHC: suggested antigen retrieval with TE buffer pH 9.0; (*) Alternatively, antigen retrieval may be performed with citrate buffer pH 6.0	

Background Information

CYP4F11 belongs to the cytochrome P450 family. Cytochromes P450 are a group of heme-thiolate monooxygenases. CYP4F11 catalyze the reaction: RH + reduced flavoprotein + O₂ = ROH + oxidized flavoprotein + H₂O. The antibody is specific to CYP4F11. It has no cross reaction to other CYP4F member. This antibody is specific to CYP4F11.

Notable Publications

Author	Pubmed ID	Journal	Application
Tao Zhang	33310663	Int Immunopharmacol	

Storage

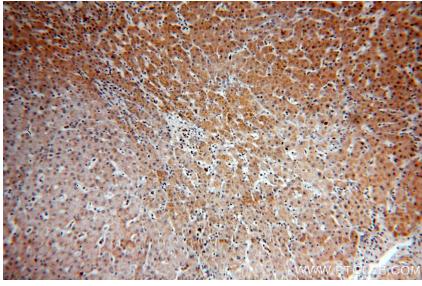
Storage:
Store at -20°C. Stable for one year after shipment.
Storage Buffer:
PBS with 0.02% sodium azide and 50% glycerol pH 7.3.
Aliquoting is unnecessary for -20°C storage

*** 20ul sizes contain 0.1% BSA

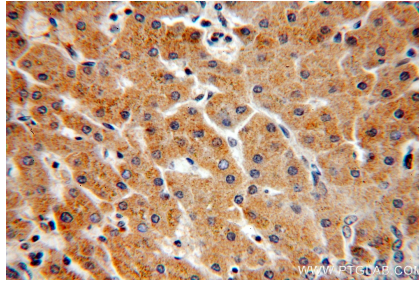
For technical support and original validation data for this product please contact:
T: 1 (888) 4PTGLAB (1-888-478-4522) (toll free in USA), or 1(312) 455-8498 (outside USA)
E: proteintech@ptglab.com
W: ptglab.com

This product is exclusively available under Proteintech Group brand and is not available to purchase from any other manufacturer.

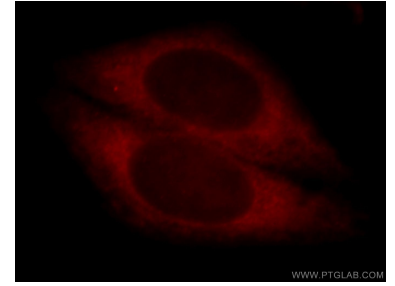
Selected Validation Data



Immunohistochemical analysis of paraffin-embedded human hepatocirrhosis using 20012-1-AP (CYP4F11-Specific antibody) at dilution of 1:50 (under 10x lens).



Immunohistochemical analysis of paraffin-embedded human hepatocirrhosis using 20012-1-AP (CYP4F11-Specific antibody) at dilution of 1:50 (under 40x lens).



Immunofluorescent analysis of HepG2 cells, using CYP4F11 antibody 20012-1-AP at 1:25 dilution and Rhodamine-labeled goat anti-rabbit IgG (red).