

For Research Use Only

# CEP350-Specific Polyclonal antibody

Catalog Number: 20022-1-AP



## Basic Information

<b>Catalog Number:</b> 20022-1-AP	<b>GenBank Accession Number:</b> NM_014810	<b>Purification Method:</b> Antigen affinity purification
<b>Size:</b> 150ul , Concentration: 500 ug/ml by Nanodrop;	<b>GeneID (NCBI):</b> 9857	<b>Recommended Dilutions:</b> WB 1:500-1:1000
<b>Source:</b> Rabbit	<b>UNIPROT ID:</b> Q5VT06	<b>IHC 1:50-1:500</b>
<b>Isotype:</b> IgG	<b>Full Name:</b> centrosomal protein 350kDa	<b>IF/ICC 1:200-1:800</b>
	<b>Calculated MW:</b> 351 kDa	
	<b>Observed MW:</b> 245 kDa	

## Applications

<b>Tested Applications:</b> WB, IHC, IF/ICC, ELISA	<b>Positive Controls:</b>
<b>Species Specificity:</b> human, mouse	<b>WB :</b> mouse heart tissue, mouse skeletal muscle tissue
<b>Note-IHC:</b> suggested antigen retrieval with <b>TE buffer pH 9.0; (*) Alternatively, antigen retrieval may be performed with citrate buffer pH 6.0</b>	<b>IHC :</b> mouse liver tissue,
	<b>IF/ICC :</b> A431 cells,

## Background Information

CEP350, or Centrosomal Protein 350 kDa, also named CAP350, FLJ38282, FLJ44058, GM133, and KIAA0480, is a protein that plays a crucial role in the formation and maintenance of the centrosome, which is essential for cell division. The molecular weight of CEP350 varies depending on the isoforms and post-translational modifications. the molecular weight of CEP350 can range from 200-245 kDa, 143 kDa, to 65 kDa. These variations in molecular weight are likely due to different isoforms of the protein that arise from alternative splicing or other post-translational modifications.

## Storage

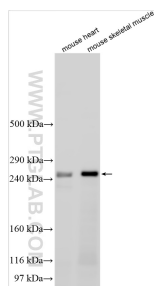
**Storage:**  
Store at -20°C. Stable for one year after shipment.  
**Storage Buffer:**  
PBS with 0.02% sodium azide and 50% glycerol pH 7.3.  
**Aliquoting is unnecessary for -20°C storage**

\*\*\* 20ul sizes contain 0.1% BSA

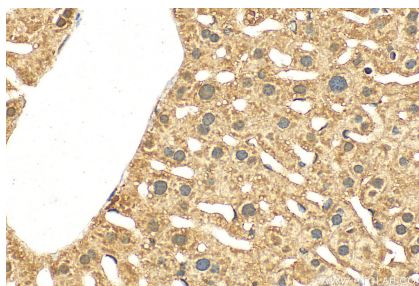
For technical support and original validation data for this product please contact:  
T: 1 (888) 4PTGLAB (1-888-478-4522) (toll free in USA), or 1(312) 455-8498 (outside USA)  
E: proteintech@ptglab.com  
W: ptglab.com

This product is exclusively available under Proteintech Group brand and is not available to purchase from any other manufacturer.

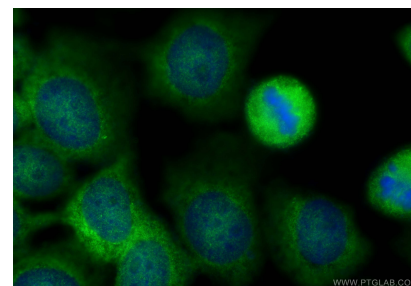
## Selected Validation Data



Various lysates were subjected to SDS PAGE followed by western blot with 20022-1-AP (CEP350-Specific antibody) at dilution of 1:500 incubated at room temperature for 1.5 hours.



Immunohistochemical analysis of paraffin-embedded mouse liver tissue slide using 20022-1-AP (CEP350-Specific antibody) at dilution of 1:200 (under 40x lens). Heat mediated antigen retrieval with Tris-EDTA buffer (pH 9.0).



Immunofluorescent analysis of (-20°C Methanol) fixed A431 cells using CEP350-Specific antibody (20022-1-AP) at dilution of 1:400 and Multi-rAb CoraLite® Plus 488-Goat Anti-Rabbit Recombinant Secondary Antibody (H+L) (RGAR002).