

For Research Use Only

CEP350-Specific Polyclonal antibody, PBS Only

Catalog Number: 20022-1-PBS



Basic Information

Catalog Number:

20022-1-PBS

Size:

100ug, Concentration: 1 mg/ml by
Nanodrop;

Source:

Rabbit

Isotype:

IgG

GenBank Accession Number:

NM_014810

GeneID (NCBI):

9857

UNIPROT ID:

Q5VT06

Full Name:

centrosomal protein 350kDa

Calculated MW:

351 kDa

Observed MW:

245 kDa

Purification Method:

Antigen affinity purification

Applications

Tested Applications:

WB, IHC, IF/ICC, Indirect ELISA

Species Specificity:

human, mouse

Background Information

CEP350, or Centrosomal Protein 350 kDa, also named CAP350, FLJ38282, FLJ44058, GM133, and KIAA0480, is a protein that plays a crucial role in the formation and maintenance of the centrosome, which is essential for cell division. The molecular weight of CEP350 varies depending on the isoforms and post-translational modifications. The molecular weight of CEP350 can range from 200-245 kDa, 143 kDa, to 65 kDa. These variations in molecular weight are likely due to different isoforms of the protein that arise from alternative splicing or other post-translational modifications.

Storage

Storage:

Store at -80°C.

Storage Buffer:

PBS Only

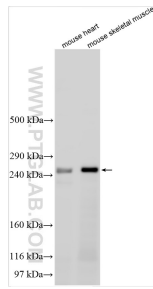
For technical support and original validation data for this product please contact:

T: 1 (888) 4PTGLAB (1-888-478-4522) (toll free
in USA), or 1(312) 455-8498 (outside USA)

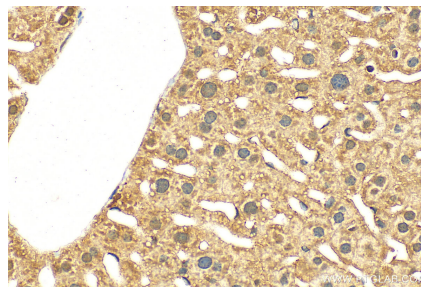
E: proteintech@ptglab.com
W: ptglab.com

This product is exclusively available under Proteintech Group brand and is not available to purchase from any other manufacturer.

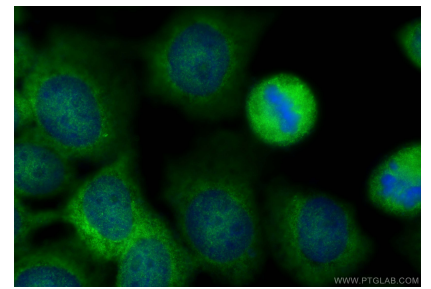
Selected Validation Data



Various lysates were subjected to SDS PAGE followed by western blot with 20022-1-AP (CEP350-Specific antibody) at dilution of 1:500 incubated at room temperature for 1.5 hours. This data was developed using the same antibody clone with 20022-1-PBS in a different storage buffer formulation.



Immunohistochemical analysis of paraffin-embedded mouse liver tissue slide using 20022-1-AP (CEP350-Specific antibody) at dilution of 1:200 (under 40x lens). Heat mediated antigen retrieval with Tris-EDTA buffer (pH 9.0). This data was developed using the same antibody clone with 20022-1-PBS in a different storage buffer formulation.



Immunofluorescent analysis of (-20°C Methanol) fixed A431 cells using CEP350-Specific antibody (20022-1-AP) at dilution of 1:400 and Multi-rAb CoraLite® Plus 488-Goat Anti-Rabbit Recombinant Secondary Antibody (H+L) (RGAR002). This data was developed using the same antibody clone with 20022-1-PBS in a different storage buffer formulation.