

For Research Use Only

URB1-Specific Polyclonal antibody

Catalog Number: 20023-1-AP

2 Publications



Basic Information

Catalog Number:

20023-1-AP

Size:

150ul, Concentration: 400 ug/ml by Nanodrop and 133 ug/ml by Bradford method using BSA as the standard;

Source:

Rabbit

Isotype:

IgG

GenBank Accession Number:

NM_014825

GeneID (NCBI):

9875

UNIPROT ID:

O60287

Full Name:

URB1 ribosome biogenesis 1 homolog (S. cerevisiae)

Calculated MW:

254 kDa

Observed MW:

240-260 kDa

Purification Method:

Antigen affinity purification

Recommended Dilutions:

WB 1:500-1:1000

Applications

Tested Applications:

WB, ELISA

Cited Applications:

WB

Species Specificity:

human, mouse

Cited Species:

human

Positive Controls:

WB : K-562 cells,

Background Information

URB1, also named as C21orf108, KIAA0539 and NPA1, is a 2,271 amino acid protein that is homologous to the *S. cerevisiae* protein URB1 which is a nucleolar protein involved in the normal accumulation of 25S and 5.8S rRNAs and may also play a role in the biosynthesis of the 60S ribosomal unit. Also localized to the nucleolus, human URB1 is thought to have the same functions as *S. cerevisiae* URB1. The antibody is specific to URB1.

Notable Publications

Author	Pubmed ID	Journal	Application
Pengyue You	39673181	FEBS Open Bio	WB
Lin Shan	36890225	Nature	WB

Storage

Storage:

Store at -20°C. Stable for one year after shipment.

Storage Buffer:

PBS with 0.02% sodium azide and 50% glycerol pH 7.3.

Aliquoting is unnecessary for -20°C storage

*** 20ul sizes contain 0.1% BSA

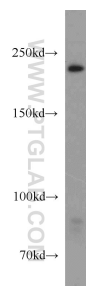
For technical support and original validation data for this product please contact:

T: 1 (888) 4PTGLAB (1-888-478-4522) (toll free in USA), or 1(312) 455-8498 (outside USA)

E: proteintech@ptglab.com
W: ptglab.com

This product is exclusively available under Proteintech Group brand and is not available to purchase from any other manufacturer.

Selected Validation Data



K-562 cells were subjected to SDS PAGE followed by western blot with 20023-1-AP (URB1-Specific antibody) at dilution of 1:800 incubated at room temperature for 1.5 hours.