

For Research Use Only

DLEC1 Polyclonal antibody

Catalog Number: 20027-1-AP



Basic Information

Catalog Number:

20027-1-AP

Size:

150ul, Concentration: 450 ug/ml by Nanodrop and 267 ug/ml by Bradford method using BSA as the standard;

Source:

Rabbit

Isotype:

IgG

GenBank Accession Number:

NM_007335

GeneID (NCBI):

9940

UNIPROT ID:

Q9Y238

Full Name:

deleted in lung and esophageal cancer 1

Calculated MW:

196 kDa

Observed MW:

80-90 kDa, 46 kDa

Purification Method:

Antigen affinity purification

Recommended Dilutions:

WB 1:200-1:1000

IP 0.5-4.0 ug for 1.0-3.0 mg of total protein lysate

IHC 1:20-1:200

IF/ICC 1:20-1:200

Applications

Tested Applications:

WB, IHC, IF/ICC, IP, ELISA

Species Specificity:

human, mouse

Note-IHC: suggested antigen retrieval with TE buffer pH 9.0; (*) Alternatively, antigen retrieval may be performed with citrate buffer pH 6.0

Positive Controls:

WB: human testis tissue, A549 cells, PC-3 cells

IP: PC-3 cells,

IHC: human testis tissue,

IF/ICC: PC-3 cells,

Background Information

DLEC1, also named as DLC1 F56, may act as a tumor suppressor by inhibiting cell proliferation.

Storage

Storage:

Store at -20°C. Stable for one year after shipment.

Storage Buffer:

PBS with 0.02% sodium azide and 50% glycerol pH 7.3.

Aliquoting is unnecessary for -20°C storage

*** 20ul sizes contain 0.1% BSA

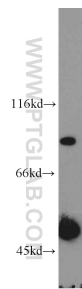
For technical support and original validation data for this product please contact:

T: 1 (888) 4PTGLAB (1-888-478-4522) (toll free in USA), or 1(312) 455-8498 (outside USA)

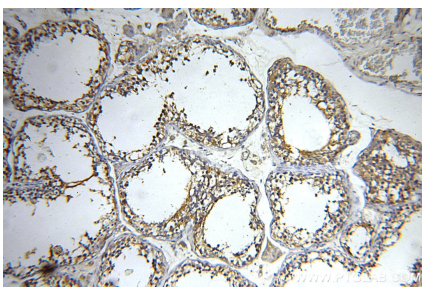
E: proteintech@ptglab.com
W: ptglab.com

This product is exclusively available under Proteintech Group brand and is not available to purchase from any other manufacturer.

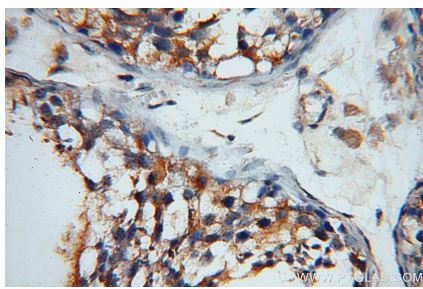
Selected Validation Data



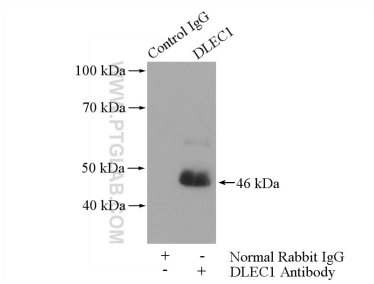
human testis tissue were subjected to SDS PAGE followed by western blot with 20027-1-AP (DLEC1 antibody) at dilution of 1:300 incubated at room temperature for 1.5 hours.



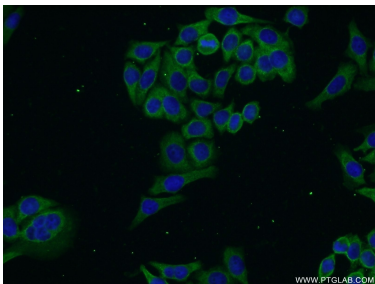
Immunohistochemical analysis of paraffin-embedded human testis using 20027-1-AP (DLEC1 antibody) at dilution of 1:50 (under 10x lens).



Immunohistochemical analysis of paraffin-embedded human testis using 20027-1-AP (DLEC1 antibody) at dilution of 1:50 (under 40x lens).



IP result of anti-DLEC1 (IP:20027-1-AP, 4ug; Detection:20027-1-AP 1:300) with PC-3 cells lysate 1100ug.



Immunofluorescent analysis of PC-3 cells using 20027-1-AP (DLEC1 antibody) at dilution of 1:50 and Alexa Fluor 488-conjugated Goat Anti-Rabbit IgG(H+L).