

For Research Use Only

LAMC3-Specific Polyclonal antibody

Catalog Number: 20030-1-AP



Basic Information

Catalog Number:

20030-1-AP

Size:

150ul , Concentration: 447 ug/ml by Bradford method using BSA as the standard;

Source:

Rabbit

Isotype:

IgG

GenBank Accession Number:

NM_006059

GeneID (NCBI):

10319

UNIPROT ID:

Q9Y6N6

Full Name:

laminin, gamma 3

Calculated MW:

1575 aa, 171 kDa

Observed MW:

173-200 kDa

Purification Method:

Antigen affinity purification

Recommended Dilutions:

WB 1:500-1:1000

Applications

Tested Applications:

WB, ELISA

Species Specificity:

human, mouse

Positive Controls:

WB : mouse brain tissue, HEK-293 cells, human placenta tissue

Background Information

Binding to cells via a high affinity receptor, LAMC3 is thought to mediate the attachment, migration and organization of cells into tissues during embryonic development by interacting with other extracellular matrix components. The antibody is specific to LAMC3.

Storage

Storage:

Store at -20°C. Stable for one year after shipment.

Storage Buffer:

PBS with 0.02% sodium azide and 50% glycerol pH 7.3.

Aliquoting is unnecessary for -20°C storage

*** 20ul sizes contain 0.1% BSA

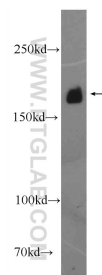
For technical support and original validation data for this product please contact:

T: 1 (888) 4PTGLAB (1-888-478-4522) (toll free in USA), or 1(312) 455-8498 (outside USA)

E: proteintech@ptglab.com
W: ptglab.com

This product is exclusively available under Proteintech Group brand and is not available to purchase from any other manufacturer.

Selected Validation Data



mouse brain tissue were subjected to SDS PAGE followed by western blot with 20030-1-AP (LAMC3-Specific Antibody) at dilution of 1:600 incubated at room temperature for 1.5 hours.