

For Research Use Only

CIT Polyclonal antibody

Catalog Number: 20033-1-AP **3 Publications**



Basic Information

Catalog Number:

20033-1-AP

Size:

150ul, Concentration: 450 µg/ml by Nanodrop and 367 µg/ml by Bradford method using BSA as the standard;

Source:

Rabbit

Isotype:

IgG

GenBank Accession Number:

NM_007174

GeneID (NCBI):

11113

UNIPROT ID:

O14578

Full Name:

citron (rho-interacting, serine/threonine kinase 21)

Calculated MW:

231 kDa

Observed MW:

230 kDa, 177 kDa

Purification Method:

Antigen affinity purification

Recommended Dilutions:

WB 1:500-1:2000

IF 1:10-1:100

Applications

Tested Applications:

IF, WB, ELISA

Cited Applications:

WB

Species Specificity:

human, mouse, rat

Cited Species:

human, mouse

Positive Controls:

WB : A431 cells, mouse brain tissue, HeLa cells, rat brain tissue

IF : HepG2 cells,

Background Information

CIT, also named KIAA0949, STK21 and CR1K, belongs to the protein kinase superfamily and AGC Ser/Thr protein kinase family. It is required for KIF14 localization to the central spindle and midbody. CIT may play a role in cytokinesis. Putative RHO/RAC effector that binds to the GTP-bound forms of RHO and RAC1. It probably binds p21 with a tighter specificity in vivo. CIT plays an important role in the regulation of cytokinesis and the development of the central nervous system. The antibody recognizes all the isoforms of CIT.

Notable Publications

Author	Pubmed ID	Journal	Application
Federica Morani	33800494	Int J Mol Sci	WB
Kelsey L Swartz	27795297	Mol Cell Biol	WB
Lijuan Liu	38102321	Sci Rep	WB

Storage

Storage:

Store at -20°C. Stable for one year after shipment.

Storage Buffer:

PBS with 0.02% sodium azide and 50% glycerol pH 7.3.

Aliquoting is unnecessary for -20°C storage

*** 20ul sizes contain 0.1% BSA

For technical support and original validation data for this product please contact:

T: 1 (888) 4PTGLAB (1-888-478-4522) (toll free in USA), or 1(312) 455-8498 (outside USA)

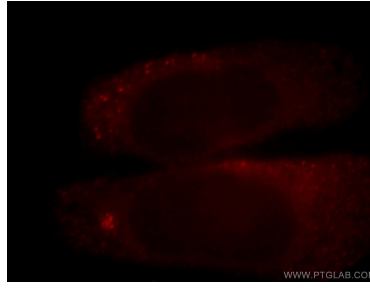
E: proteintech@ptglab.com
W: ptglab.com

This product is exclusively available under Proteintech Group brand and is not available to purchase from any other manufacturer.

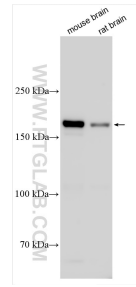
Selected Validation Data



A431 cells were subjected to SDS PAGE followed by western blot with 20033-1-AP (CIT antibody) at dilution of 1:300 incubated at room temperature for 1.5 hours.



Immunofluorescent analysis of HepG2 cells, using CIT antibody 20033-1-AP at 1:25 dilution and Rhodamine-labeled goat anti-rabbit IgG (red).



Various lysates were subjected to SDS PAGE followed by western blot with 20033-1-AP (CIT antibody) at dilution of 1:500 incubated at room temperature for 1.5 hours.