

For Research Use Only

ZC3H4 Polyclonal antibody

Catalog Number: 20041-1-AP **9 Publications**



Basic Information

Catalog Number: 20041-1-AP	GenBank Accession Number: NM_015168	Purification Method: Antigen affinity purification
Size: 150ul , Concentration: 400 µg/ml by Nanodrop and 267 µg/ml by Bradford method using BSA as the standard;	GeneID (NCBI): 23211	Recommended Dilutions: WB 1:500-1:1000 IHC 1:20-1:200 IF 1:10-1:100
Source: Rabbit	Full Name: zinc finger CCH-type containing 4	
Isotype: IgG	Calculated MW: 140 kDa	
	Observed MW: 130-140 kDa	

Applications

Tested Applications: IF, IHC, WB, ELISA	Positive Controls: WB : mouse brain tissue, human brain tissue IHC : human cervical cancer tissue, IF : HeLa cells,
Cited Applications: IF, WB	
Species Specificity: human, mouse	
Cited Species: human, mouse	
Note-IHC: suggested antigen retrieval with TE buffer pH 9.0; (*) Alternatively, antigen retrieval may be performed with citrate buffer pH 6.0	

Background Information

ZC3H4, also named as C19orf7 and KIAA1064, is a 140kd protein. The antibody can recognize near the C-term of ZC3H4.

Notable Publications

Author	Pubmed ID	Journal	Application
Rong Jiang	32218530	Lab Invest	WB
Rong Jiang	30826420	Toxicol Lett	WB
Xiyue Yang	29401612	FASEB J	WB,IF

Storage

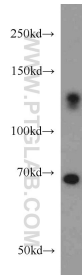
Storage:
Store at -20°C. Stable for one year after shipment.
Storage Buffer:
PBS with 0.02% sodium azide and 50% glycerol pH 7.3.
Aliquoting is unnecessary for -20°C storage

*** 20ul sizes contain 0.1% BSA

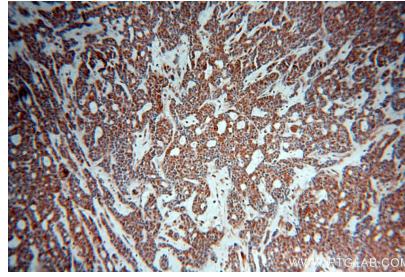
For technical support and original validation data for this product please contact:
T: 1 (888) 4PTGLAB (1-888-478-4522) (toll free in USA), or 1(312) 455-8498 (outside USA)
E: proteintech@ptglab.com
W: ptglab.com

This product is exclusively available under Proteintech Group brand and is not available to purchase from any other manufacturer.

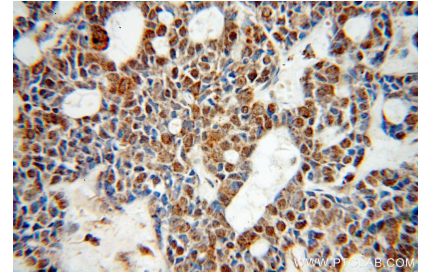
Selected Validation Data



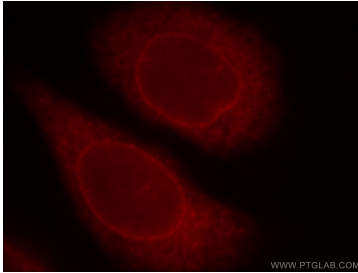
mouse brain tissue were subjected to SDS PAGE followed by western blot with 20041-1-AP (ZC3H4 antibody) at dilution of 1:500 incubated at room temperature for 1.5 hours.



Immunohistochemical analysis of paraffin-embedded human cervical cancer using 20041-1-AP (ZC3H4 antibody) at dilution of 1:50 (under 10x lens).



Immunohistochemical analysis of paraffin-embedded human cervical cancer using 20041-1-AP (ZC3H4 antibody) at dilution of 1:50 (under 40x lens).



Immunofluorescent analysis of HeLa cells, using ZC3H4 antibody 20041-1-AP at 1:25 dilution and Rhodamine-labeled goat anti-rabbit IgG (red).