

For Research Use Only

# CDH26 Polyclonal antibody

Catalog Number: 20057-1-AP

Featured Product

1 Publications



## Basic Information

### Catalog Number:

20057-1-AP

### Size:

150ul, Concentration: 240 ug/ml by Nanodrop and 227 ug/ml by Bradford method using BSA as the standard;

### Source:

Rabbit

### Isotype:

IgG

### GenBank Accession Number:

NM\_021810

### GeneID (NCBI):

60437

### UNIPROT ID:

Q8IXH8

### Full Name:

cadherin-like 26

### Calculated MW:

95 kDa

### Observed MW:

18-22 kDa, 95-100 kDa

### Purification Method:

Antigen affinity purification

### Recommended Dilutions:

WB 1:1000-1:8000

IF-P 1:50-1:500

IF/ICC 1:200-1:800

## Applications

### Tested Applications:

WB, IF/ICC, IF-P, ELISA

### Cited Applications:

WB, IF

### Species Specificity:

human

### Cited Species:

human

### Positive Controls:

WB : A549 cells, T-47D cells, HEK-293 cells, MCF-7 cells

IF-P : mouse liver tissue,

IF/ICC : MCF-7 cells,

## Background Information

CDH26, also named VR20, is a member of cadherins which are calcium-dependent cell adhesion proteins. Cadherins preferentially interact with themselves in a homophilic manner in connecting cells. Cadherins may thus contribute to the sorting of heterogeneous cell types. CDH26 produces 4 isoforms through alternative splicing, with molecular weights of 13, 18, 92, and 95 kDa, respectively.

## Notable Publications

Author	Pubmed ID	Journal	Application
Marrah E Lachowicz-Scroggins	29449961	Cell Discov	WB,IF

## Storage

### Storage:

Store at -20°C. Stable for one year after shipment.

### Storage Buffer:

PBS with 0.02% sodium azide and 50% glycerol pH 7.3.

Aliquoting is unnecessary for -20°C storage

\*\*\* 20ul sizes contain 0.1% BSA

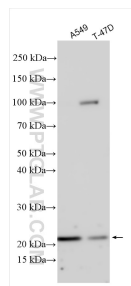
For technical support and original validation data for this product please contact:

T: 1 (888) 4PTGLAB (1-888-478-4522) (toll free in USA), or 1(312) 455-8498 (outside USA)

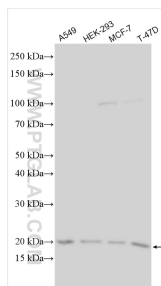
E: [proteintech@ptglab.com](mailto:proteintech@ptglab.com)  
W: [ptglab.com](http://ptglab.com)

This product is exclusively available under Proteintech Group brand and is not available to purchase from any other manufacturer.

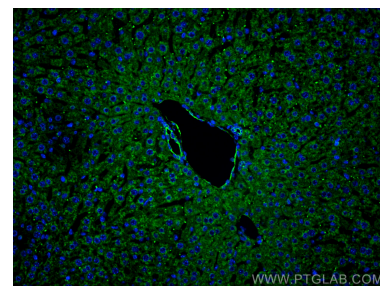
## Selected Validation Data



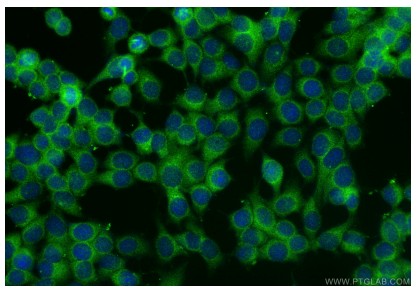
Various lysates were subjected to SDS PAGE followed by western blot with 20057-1-AP (CDH26 antibody) at dilution of 1:2000 incubated at room temperature for 1.5 hours.



Various lysates were subjected to SDS PAGE followed by western blot with 20057-1-AP (CDH26 antibody) at dilution of 1:4000 incubated at room temperature for 1.5 hours.



Immunofluorescent analysis of (4% PFA) fixed paraffin-embedded mouse liver tissue using CDH26 antibody (20057-1-AP) at dilution of 1:200 and CoraLite®488-Conjugated Goat Anti-Rabbit IgG(H+L) (SA00013-2). Heat mediated antigen retrieval with Tris-EDTA buffer (pH 9.0).



Immunofluorescent analysis of (-20°C Methanol) fixed MCF-7 cells using CDH26 antibody (20057-1-AP) at dilution of 1:400 and CoraLite®488-Conjugated Goat Anti-Rabbit IgG(H+L) (SA00013-2).