

For Research Use Only

CDH26 Polyclonal antibody, PBS Only

Catalog Number: 20057-1-PBS

Featured Product



Basic Information

Catalog Number:

20057-1-PBS

Size:

100ug, Concentration: 1 mg/ml by Nanodrop;

Source:

Rabbit

Isotype:

IgG

GenBank Accession Number:

NM_021810

GeneID (NCBI):

60437

UNIPROT ID:

Q8IXH8

Full Name:

cadherin-like 26

Calculated MW:

95 kDa

Observed MW:

18-22 kDa, 95-100 kDa

Purification Method:

Antigen affinity purification

Applications

Tested Applications:

WB, IF/ICC, IF-P, Indirect ELISA

Species Specificity:

human

Background Information

CDH26, also named VR20, is a member of cadherins which are calcium-dependent cell adhesion proteins. Cadherins preferentially interact with themselves in a homophilic manner in connecting cells. Cadherins may thus contribute to the sorting of heterogeneous cell types. CDH26 produces 4 isoforms through alternative splicing, with molecular weights of 13, 18, 92, and 95 kDa, respectively.

Storage

Storage:

Store at -80°C.

Storage Buffer:

PBS Only

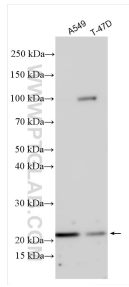
For technical support and original validation data for this product please contact:

T: 1 (888) 4PTGLAB (1-888-478-4522) (toll free in USA), or 1(312) 455-8498 (outside USA)

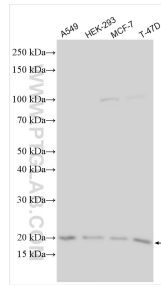
E: proteintech@ptglab.com
W: ptglab.com

This product is exclusively available under Proteintech Group brand and is not available to purchase from any other manufacturer.

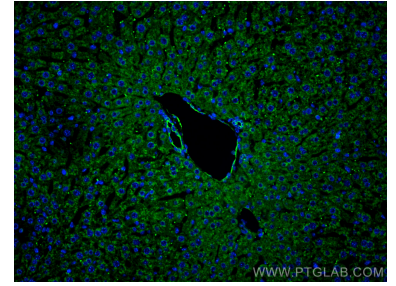
Selected Validation Data



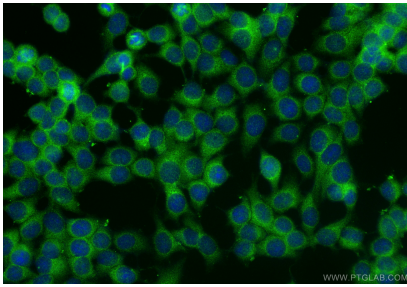
Various lysates were subjected to SDS PAGE followed by western blot with 20057-1-AP (CDH26 antibody) at dilution of 1:2000 incubated at room temperature for 1.5 hours. This data was developed using the same antibody clone with 20057-1-PBS in a different storage buffer formulation.



Various lysates were subjected to SDS PAGE followed by western blot with 20057-1-AP (CDH26 antibody) at dilution of 1:4000 incubated at room temperature for 1.5 hours. This data was developed using the same antibody clone with 20057-1-PBS in a different storage buffer formulation.



Immunofluorescent analysis of (4% PFA) fixed paraffin-embedded mouse liver tissue using CDH26 antibody (20057-1-AP) at dilution of 1:200 and CoraLite®488-Conjugated Goat Anti-Rabbit IgG(H+L) (SA00013-2). Heat mediated antigen retrieval with Tris-EDTA buffer (pH 9.0). This data was developed using the same antibody clone with 20057-1-PBS in a different storage buffer formulation.



Immunofluorescent analysis of (-20°C Methanol) fixed MCF-7 cells using CDH26 antibody (20057-1-AP) at dilution of 1:400 and CoraLite®488-Conjugated Goat Anti-Rabbit IgG(H+L) (SA00013-2). This data was developed using the same antibody clone with 20057-1-PBS in a different storage buffer formulation.