

For Research Use Only

CDH24 Polyclonal antibody, PBS Only

Catalog Number:20058-1-PBS



Basic Information

Catalog Number:

20058-1-PBS

Size:

100ug , Concentration: 1 mg/ml by Nanodrop;

Source:

Rabbit

Isotype:

IgG

GenBank Accession Number:

NM_022478

GeneID (NCBI):

64403

UNIPROT ID:

Q86UP0

Full Name:

cadherin-like 24

Calculated MW:

88 kDa

Observed MW:

88 kDa

Purification Method:

Antigen affinity purification

Applications

Tested Applications:

WB, Indirect ELISA

Species Specificity:

human, mouse, rat

Background Information

CDH24, also named as CDH11L, is a member of Cadherins which are calcium dependent cell adhesion proteins. Cadherine preferentially interact with themselves in a homophilic manner in connecting cells; cadherins may thus contribute to the sorting of heterogeneous cell types. Cadherin-24 mediates strong cell-cell adhesion.

Storage

Storage:

Store at -80°C.

Storage Buffer:

PBS only, pH7.3

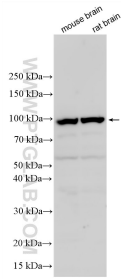
For technical support and original validation data for this product please contact:

T: 1 (888) 4PTGLAB (1-888-478-4522) (toll free in USA), or 1(312) 455-8498 (outside USA)

E: proteintech@ptglab.com
W: ptglab.com

This product is exclusively available under Proteintech Group brand and is not available to purchase from any other manufacturer.

Selected Validation Data



Various lysates were subjected to SDS PAGE followed by western blot with 20058-1-AP (CDH24 antibody) at dilution of 1:3000 incubated at room temperature for 1.5 hours. This data was developed using the same antibody clone with 20058-1-PBS in a different storage buffer formulation.