

For Research Use Only

BAGE4 Polyclonal antibody

Catalog Number: 20071-1-AP



Basic Information

Catalog Number: 20071-1-AP	GenBank Accession Number: NM_181704	Purification Method: Antigen affinity purification
Size: 150ul , Concentration: 240 µg/ml by Nanodrop and 200 µg/ml by Bradford method using BSA as the standard;	GeneID (NCBI): 85317	Recommended Dilutions: IHC 1:20-1:200
Source: Rabbit	Full Name: B melanoma antigen family, member 4	
Isotype: IgG	Calculated MW: 5 kDa	

Applications

Tested Applications: IHC, ELISA	Positive Controls: IHC : human lung cancer tissue, human testis tissue
Species Specificity: human	

Note-IHC: suggested antigen retrieval with TE buffer pH 9.0; (*) Alternatively, antigen retrieval may be performed with citrate buffer pH 6.0

Background Information

BAGE4, also named as MLL3P and CT2.4, belongs to the BAGE family. It is a candidate gene encoding tumor antigens. BAGE4 is Cancer/testis antigen 2.4. The antibody can recognize BAGE4, BAGE, BAGE3, BAGE5.

Storage

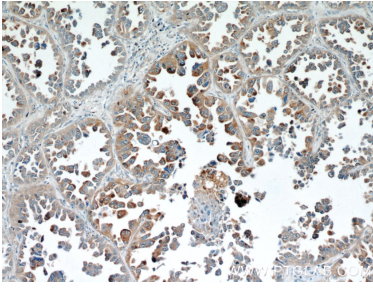
Storage:
Store at -20°C. Stable for one year after shipment.
Storage Buffer:
PBS with 0.02% sodium azide and 50% glycerol pH 7.3.
Aliquoting is unnecessary for -20°C storage

*** 20ul sizes contain 0.1% BSA

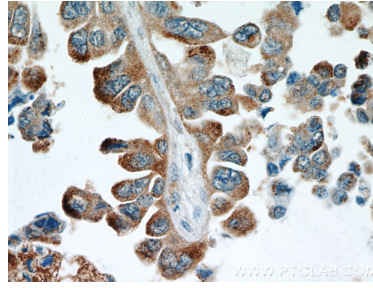
For technical support and original validation data for this product please contact:
T: 1 (888) 4PTGLAB (1-888-478-4522) (toll free in USA), or 1(312) 455-8498 (outside USA)
E: proteintech@ptglab.com
W: ptglab.com

This product is exclusively available under Proteintech Group brand and is not available to purchase from any other manufacturer.

Selected Validation Data



Immunohistochemical analysis of paraffin-embedded human lung cancer using 20071-1-AP (BAGE4 antibody) at dilution of 1:50 (under 10x lens).



Immunohistochemical analysis of paraffin-embedded human lung cancer using 20071-1-AP (BAGE4 antibody) at dilution of 1:50 (under 40x lens).