

For Research Use Only

GPR101-Specific Polyclonal antibody

Catalog Number: 20074-1-AP



Basic Information

Catalog Number: 20074-1-AP	GenBank Accession Number: NM_054021	Purification Method: Antigen affinity purification
Size: 150ul , Concentration: 173 ug/ml by Nanodrop and 173 ug/ml by Bradford method using BSA as the standard;	GeneID (NCBI): 83550	Recommended Dilutions: WB 1:500-1:1000 IHC 1:500-1:2000
Source: Rabbit	UNIPROT ID: Q96P66	
Isotype: IgG	Full Name: G protein-coupled receptor 101	
	Calculated MW: 57 kDa	
	Observed MW: 57 kDa	

Applications

Tested Applications: WB, IHC, FC (Intra), ELISA	Positive Controls: WB : HEK-293 cells, COS-7 cells
Species Specificity: human, monkey	IHC : mouse kidney tissue, FC (Intra) : HEK-293 cells,
Note-IHC: suggested antigen retrieval with TE buffer pH 9.0; (*) Alternatively, antigen retrieval may be performed with citrate buffer pH 6.0	

Background Information

GPR101, also named as GPCR6, belongs to the G-protein coupled receptor 1 family. It is an orphan receptor. This antibody is specific to GPR101.

Storage

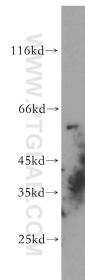
Storage:
Store at -20°C. Stable for one year after shipment.
Storage Buffer:
PBS with 0.02% sodium azide and 50% glycerol, pH7.3
Aliquoting is unnecessary for -20°C storage

*** 20ul sizes contain 0.1% BSA

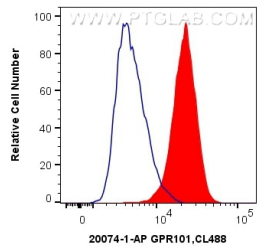
For technical support and original validation data for this product please contact:
T: 1 (888) 4PTGLAB (1-888-478-4522) (toll free in USA), or 1(312) 455-8498 (outside USA)
E: proteintech@ptglab.com
W: ptglab.com

This product is exclusively available under Proteintech Group brand and is not available to purchase from any other manufacturer.

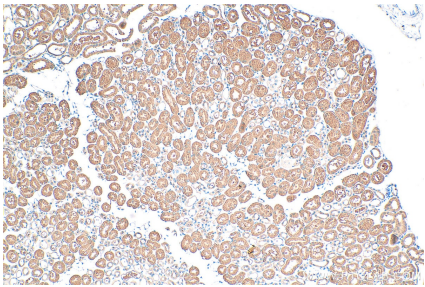
Selected Validation Data



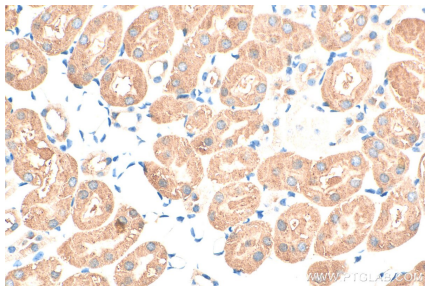
HEK-293 cells were subjected to SDS PAGE followed by western blot with 20074-1-AP (GPR101-Specific antibody) at dilution of 1:300 incubated at room temperature for 1.5 hours.



1X10⁶ HEK-293 cells were intracellularly stained with 0.2 ug Anti-Human GPR101-Specific (20074-1-AP) and CoraLite®488-Conjugated AffiniPure Goat Anti-Rabbit IgG(H+L) at dilution 1:1000 (red), or 0.2 ug Control Antibody. Cells were fixed with 4% PFA and permeabilized with Flow Cytometry Perm Buffer (PF00011-C).



Immunohistochemical analysis of paraffin-embedded mouse kidney tissue slide using 20074-1-AP (GPR101-Specific antibody) at dilution of 1:1000 (under 10x lens). Heat mediated antigen retrieval with Tris-EDTA buffer (pH 9.0).



Immunohistochemical analysis of paraffin-embedded mouse kidney tissue slide using 20074-1-AP (GPR101-Specific antibody) at dilution of 1:1000 (under 40x lens). Heat mediated antigen retrieval with Tris-EDTA buffer (pH 9.0).